



- determine scope target:** fire department only, or combined public safety building

status: currently underway, awaiting confirmation.
- establish budget/reconcile scope:** prepare cost estimate for replacement; calculate 50%; value engineer scope to stay under ceiling.

status: conceptual estimate and building valuation complete. *Conclusion: budget will be very tight*
- create technical working group:** 1) form a steering committee that includes operational personnel; 2) authorize steering committee members to make decisions on behalf of departments; 3) creatively explore any remaining scenarios; 4) prepare solution options for discussion.

status: formed 2 steering committees. Background tasks completed. **Item #4 is the topic of this meeting.**
- return to community with solutions.** the next outreach should demonstrate a clear, negotiated path toward optimized solution.

status: pending, recommended to occur *after* code verification meetings with County

next steps presented 11/16/2019 & status

- determine scope target:** fire department only, or combined public safety building

status: currently underway, awaiting confirmation.
- establish budget/reconcile scope:** prepare cost estimate for replacement; calculate 50%; value engineer scope to stay under ceiling.

status: conceptual estimate and building valuation complete. *Conclusion: budget will be very tight*
- create technical working group:** 1) form a steering committee that includes operational personnel; 2) authorize steering committee members to make decisions on behalf of departments; 3) creatively explore any remaining scenarios; 4) prepare solution options for discussion.

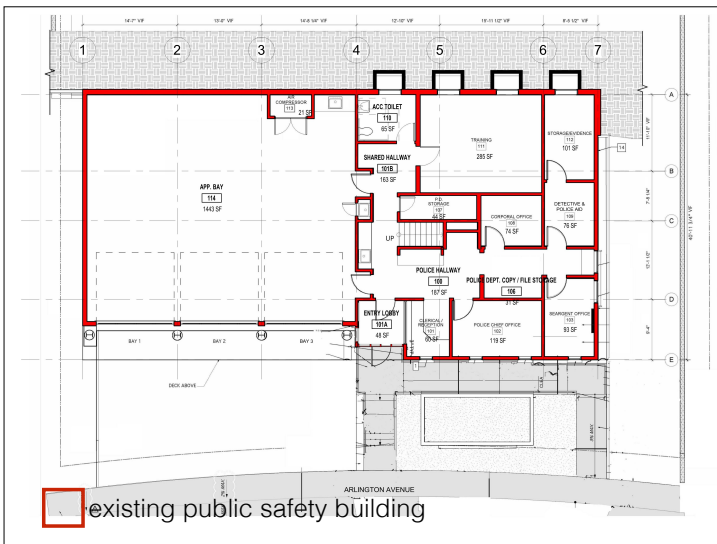
status: formed 2 steering committees. Background tasks completed. **Item #4 is the topic of this meeting.**
- return to community with solutions.** the next outreach should demonstrate a clear, negotiated path toward optimized solution.

status: pending, recommended to occur *after* code verification meetings with County

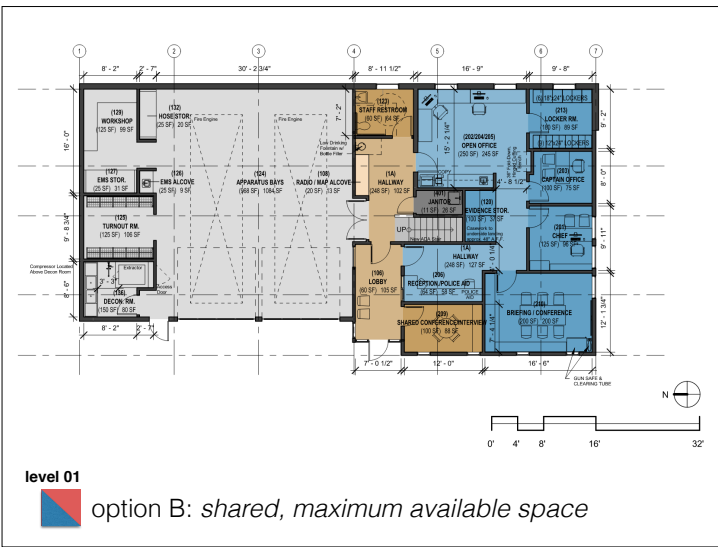
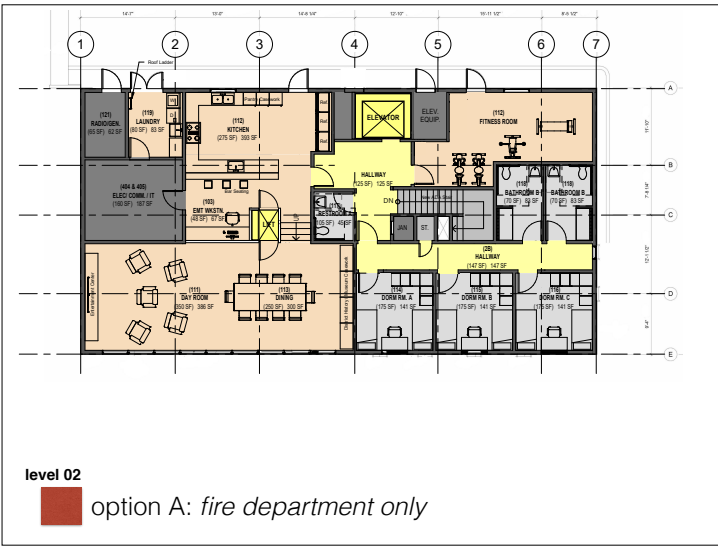
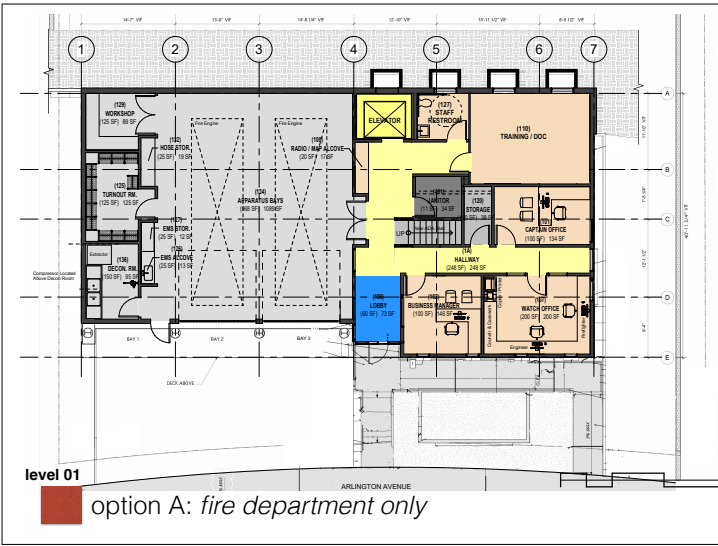
next steps presented 11/16/2019 & status

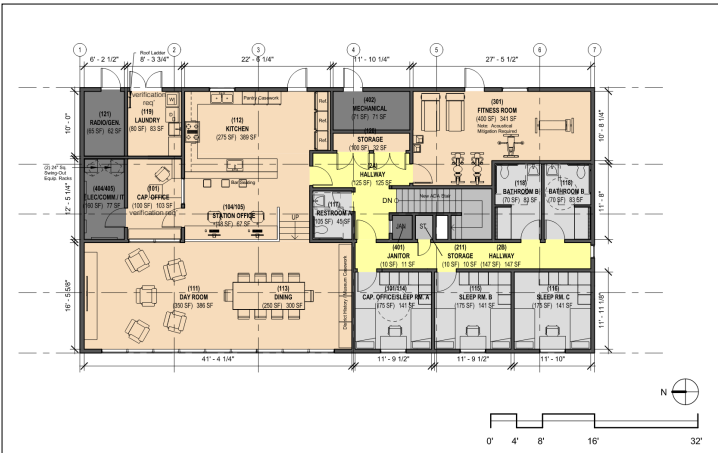
- **option A:** fire department only (previously reviewed)
- **option B:** shared fire & police assumed *maximum* available space
- **option C:** shared fire & police assumed *minimum* available space

 floor plan options for discussion



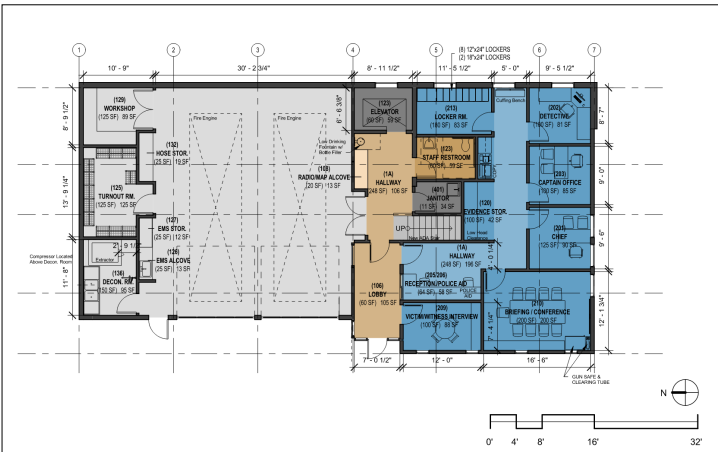






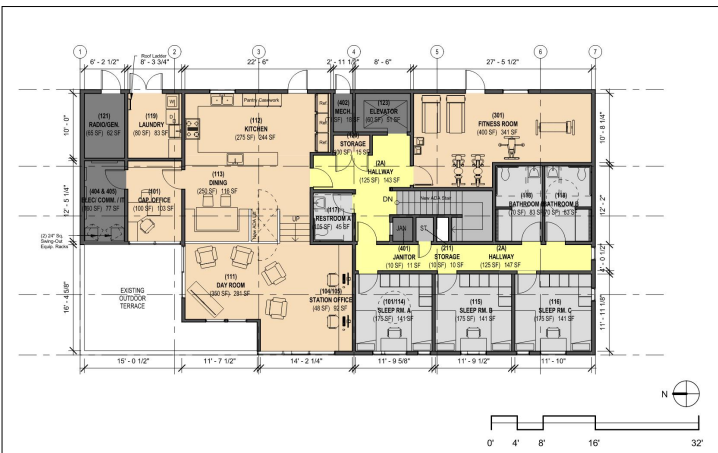
level 02

 option B: *shared, maximum available space*



level 01

 option C: *shared, minimum available space*



level 02

 option C: *shared, minimum available space*

option b

LEVEL 01

gross: 3,092 sf
fire department: 1,535 nsf*
police department: 978 nsf
shared: 417 nsf**

LEVEL 02

gross: 3,259 sf
fire department: 3,117 nsf

* includes stair & two existing app. bays
** includes lobby, conference/interview, secure hallway, restroom

option c


LEVEL 01

gross: 3,092 sf
fire department: 1,598 nsf*
police department: 997 nsf
shared: 332 nsf**

LEVEL 02

gross: 2,392 sf
fire department: 2,796 nsf

* elevator, stair, & two (e) app. bays
** includes lobby, secure hallway, restroom

 renovation options b & c - area calculations

• **option A:** fire department only (previously reviewed)

no opinion

• **option B:** shared fire & police assumed *maximum* available space

• **option C:** shared fire & police assumed *minimum* available space

recommend advancing **both** options to have a viable fall-back position.

recommendations