

An aerial photograph of a densely populated residential area, likely Kensington, showing a mix of green spaces, trees, and buildings. A large, irregularly shaped pond is visible on the right side of the image. The text is overlaid on the center of the image.

kensington public safety building

▪ board of directors meeting

september 11, 2019

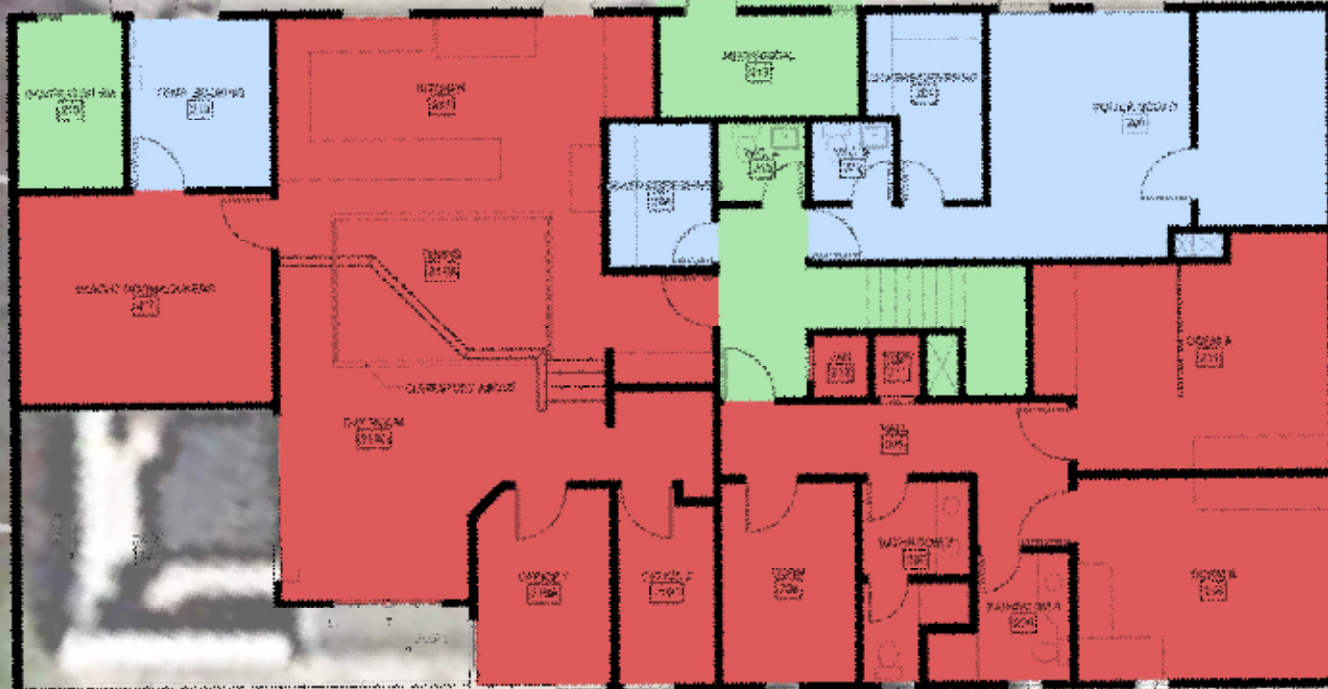










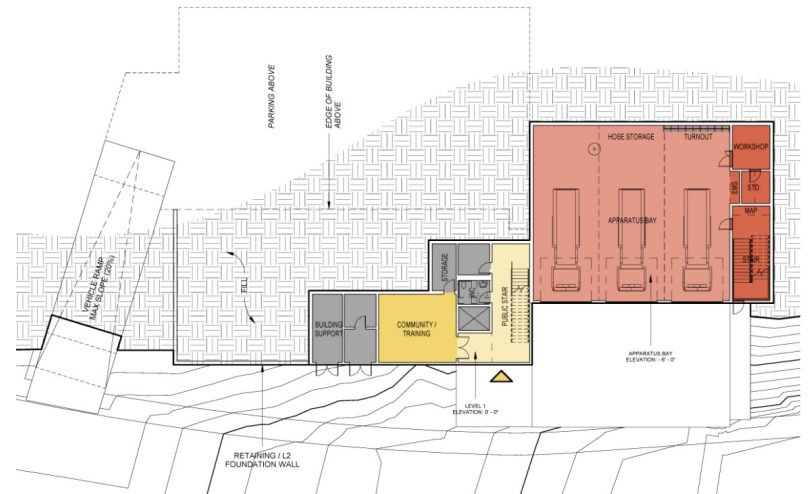
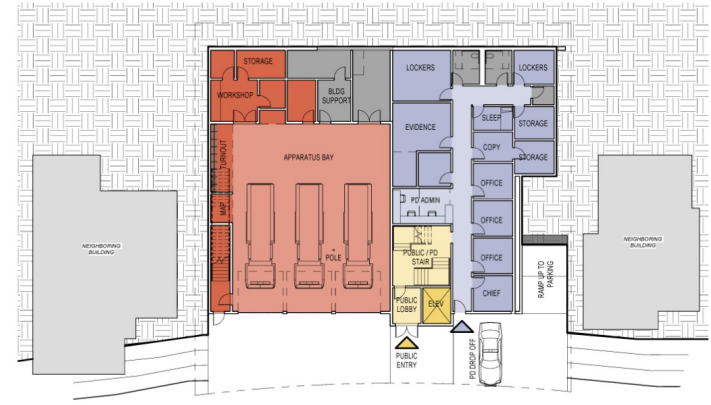
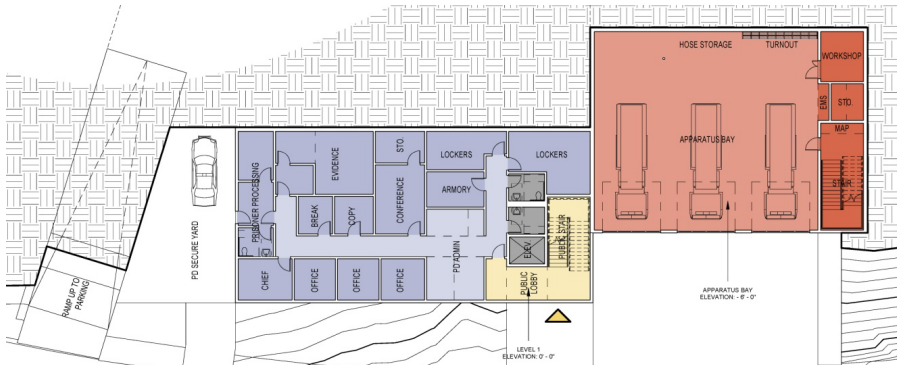
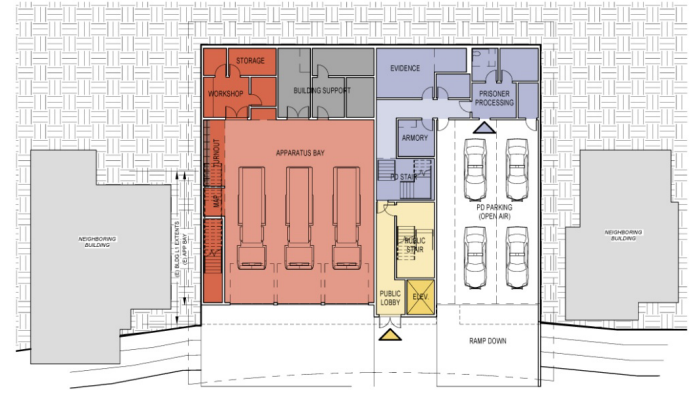
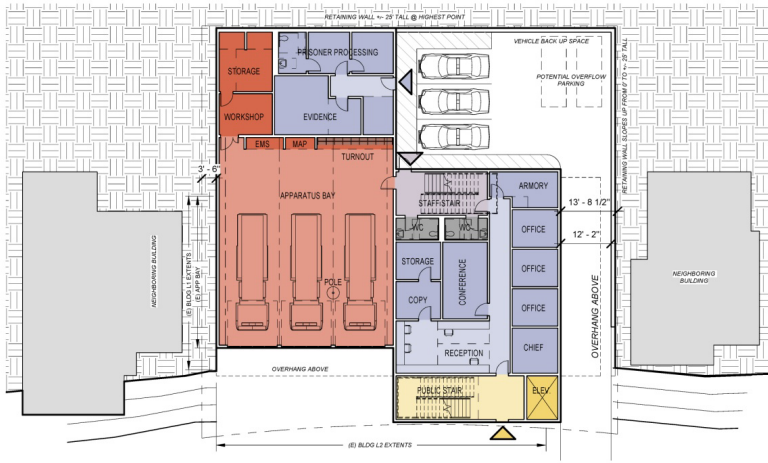


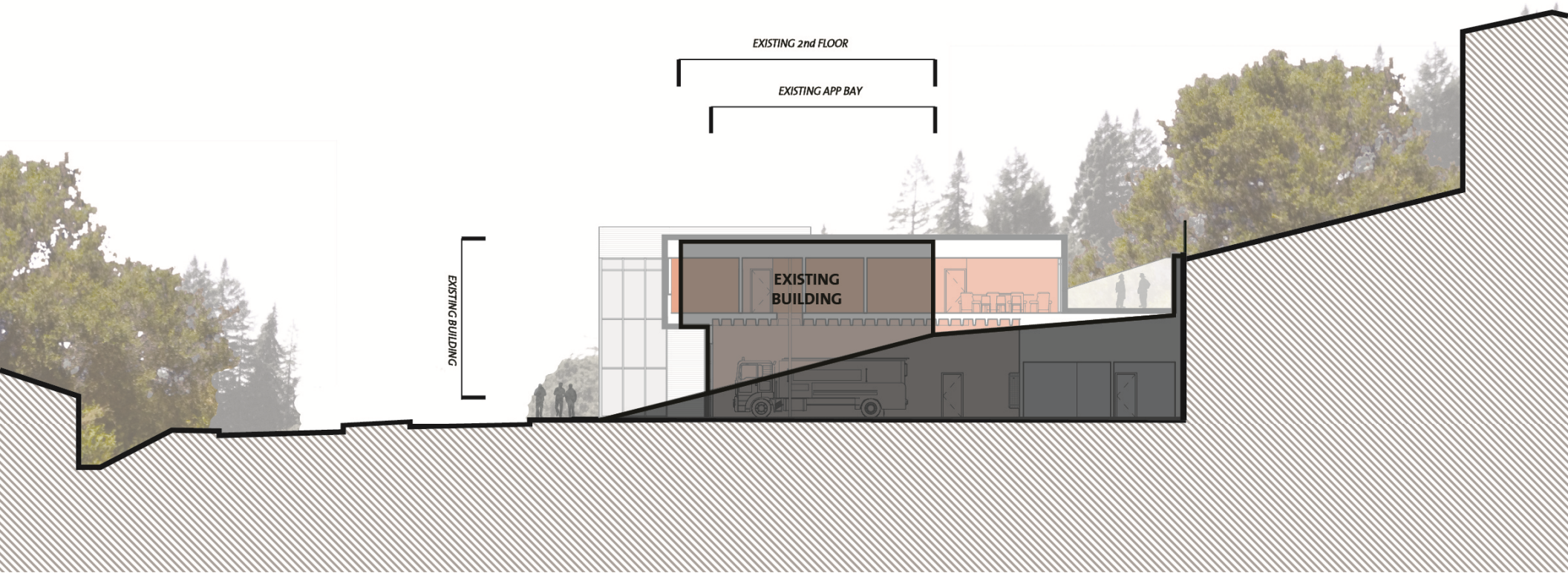
paths to correct the situation

- seismic retrofit only (no operational improvements)
- remodel and expand
- tear down and start again
- find new site

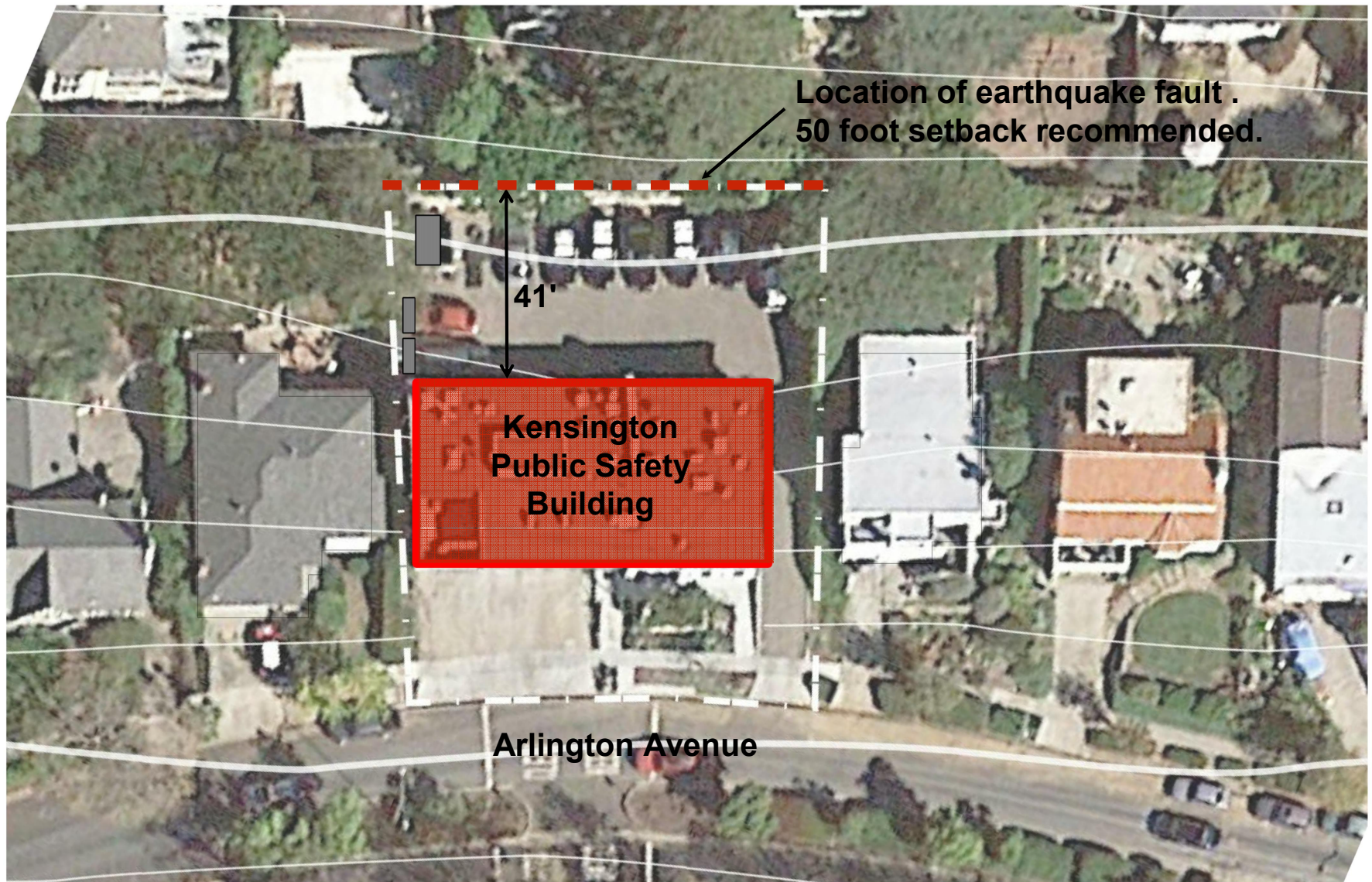
13 schemes studied

0	Retrofit	"Seismic Retrofit"
A	Renovation	"Incremental Expansions"
B	Renovation	"1 Story Excavation"
C	Rebuild	"2 Story Excavation"
D	Rebuild	"Mezzanine"
E	Rebuild	"Mezzanine w/ Lot"
F	Rebuild	
G	Rebuild	"Reversed"
AA	New	"Stacked Departments"
BB	New	"Side by Side Departments"
CC	New	"New Mezzanine"
DD	New	"Operational Ground Floor"
FF	New	"Nested in Topography"

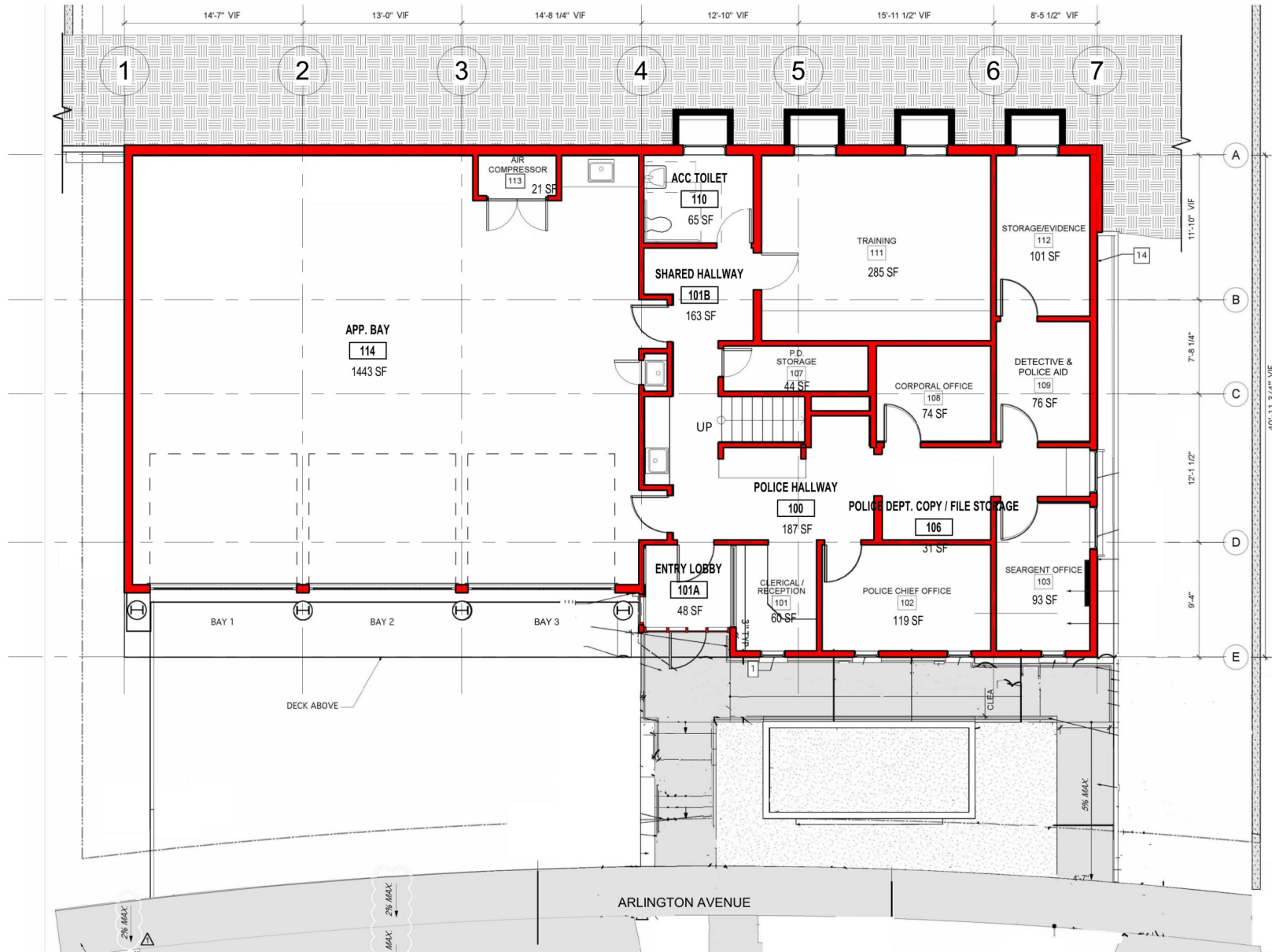




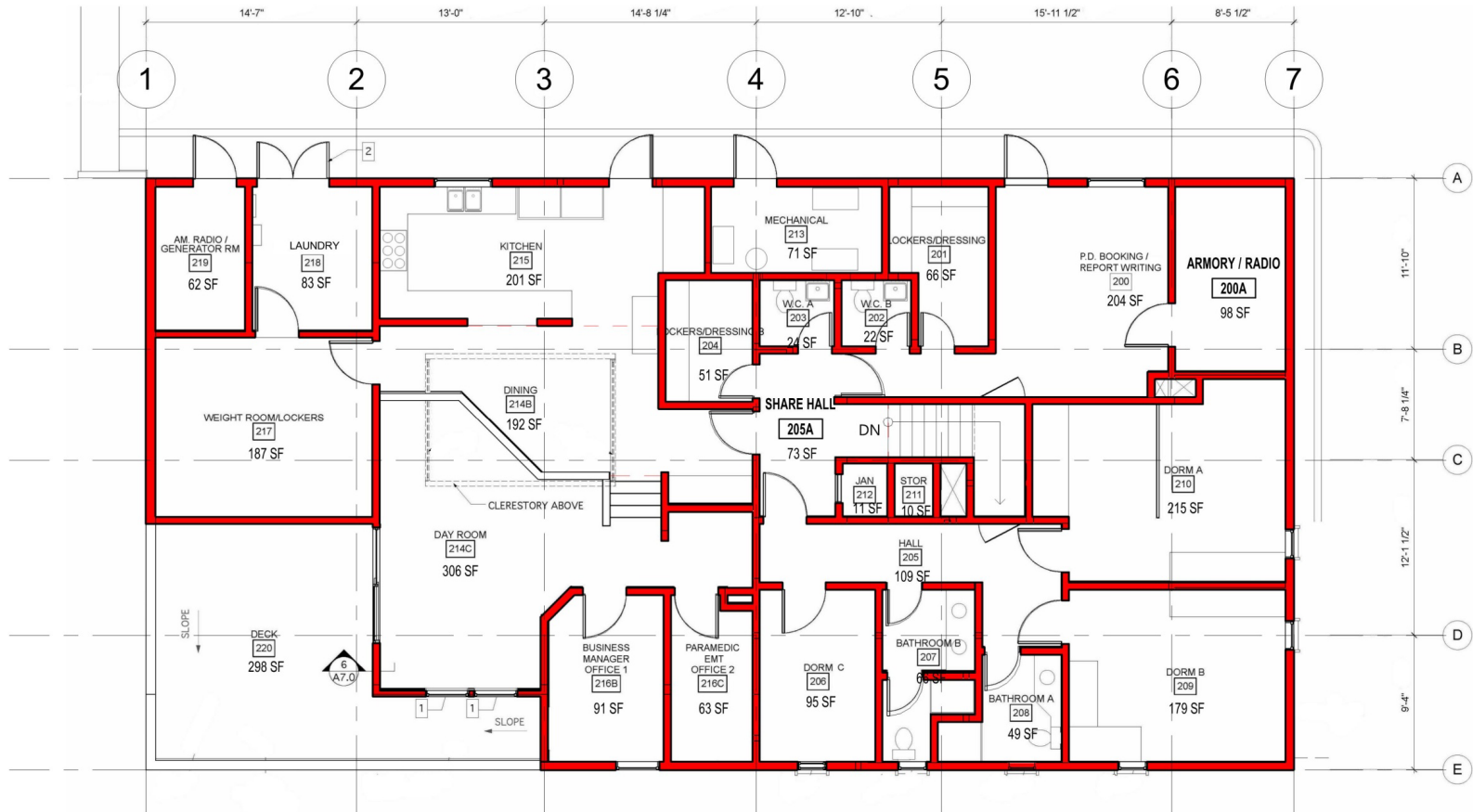
section- looking north



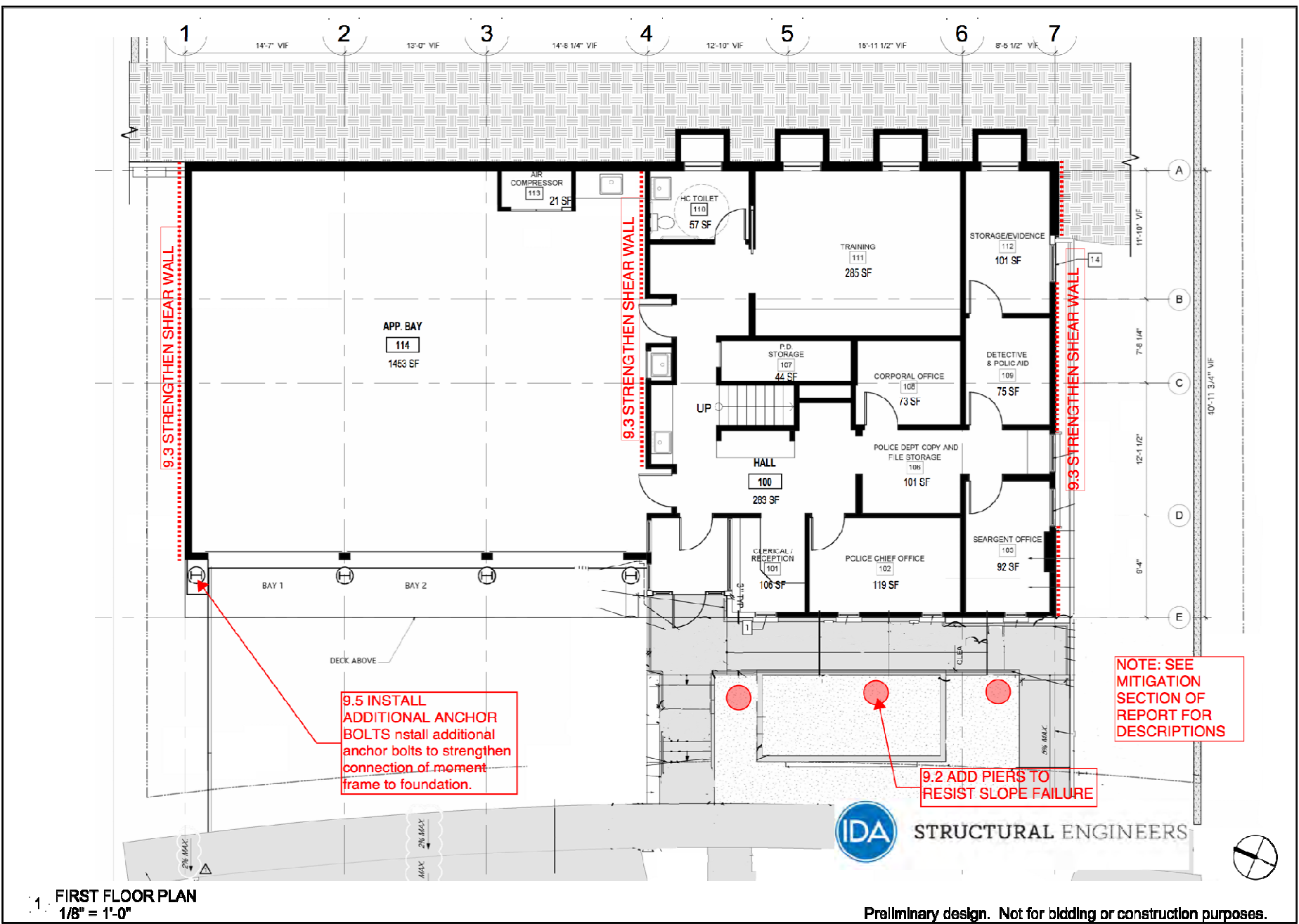
Existing Site Plan



Existing First Floor



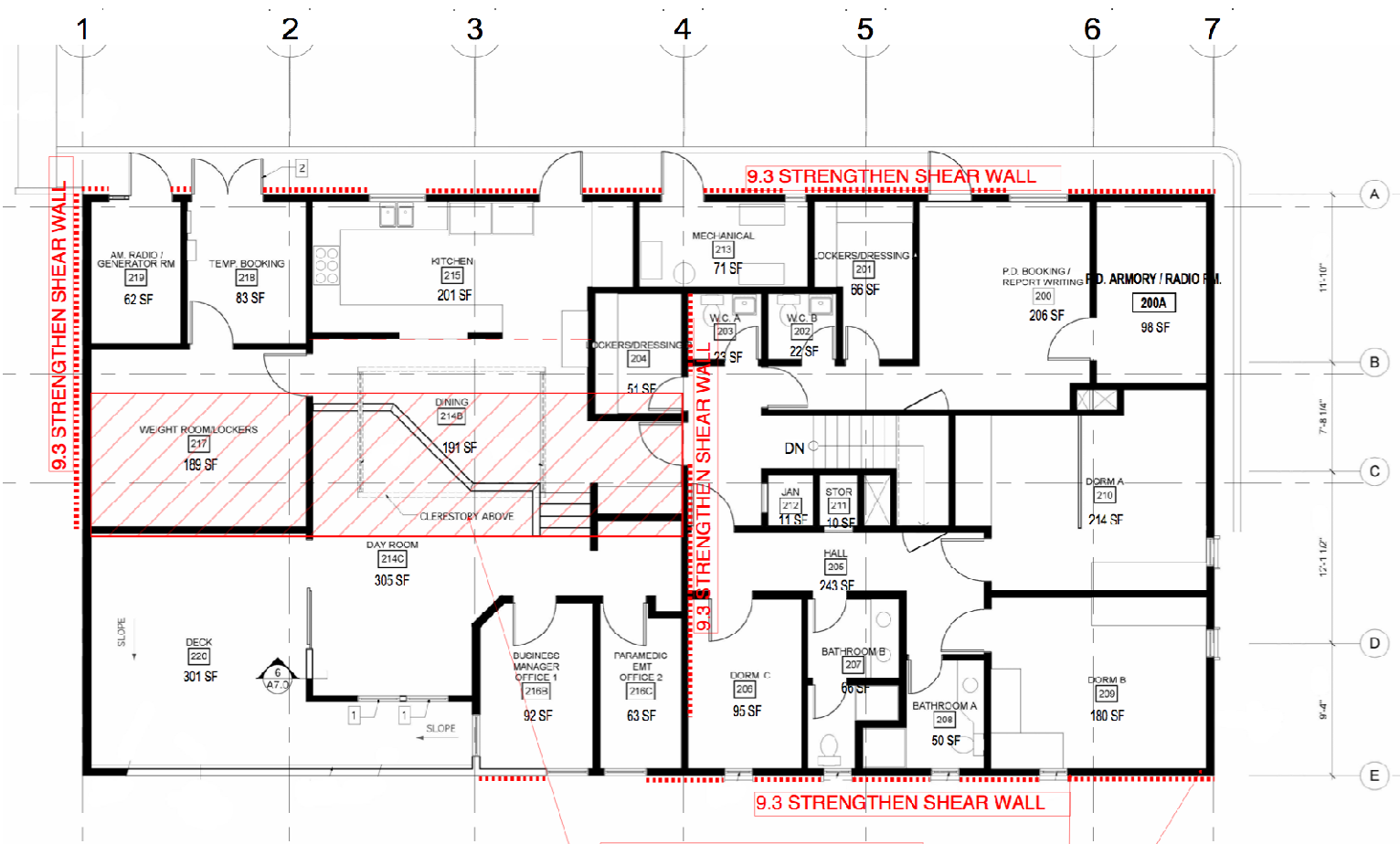
Existing Second Floor



1. FIRST FLOOR PLAN
1/8" = 1'-0"

IDA STRUCTURAL ENGINEERS

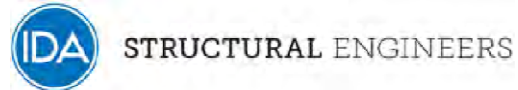
Preliminary design. Not for bidding or construction purposes.



NOTE: SEE MITIGATION SECTION OF REPORT FOR DESCRIPTIONS

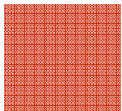
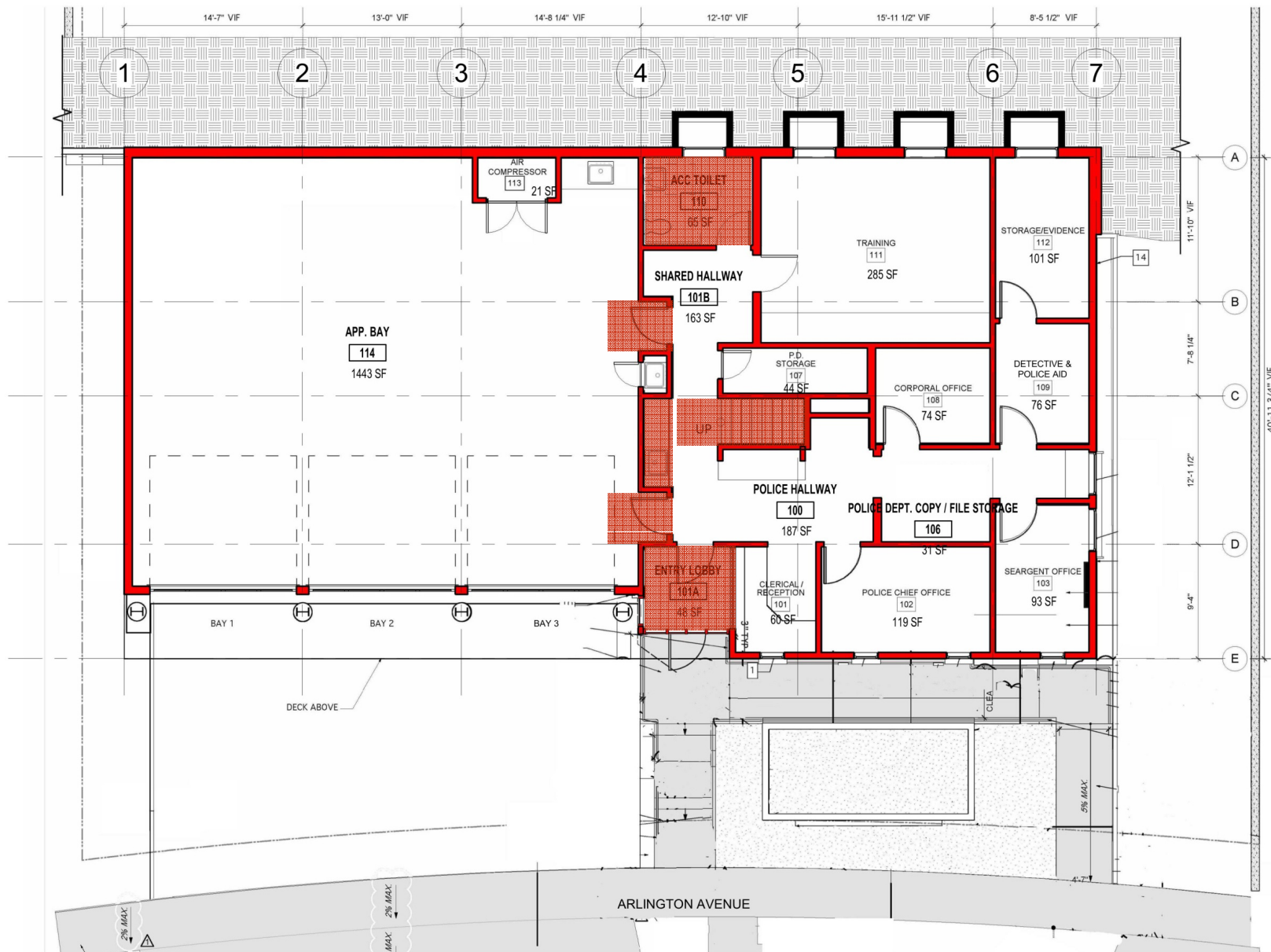
9.4 STRENGTHEN DIAPHRAGM AND VERTICAL TRANSITION AT SPLIT LEVEL

9.4 PROVIDE HOLDOWN AND POSTS TO FOUNDATION BELOW TYP AT LINE E

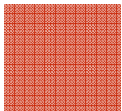
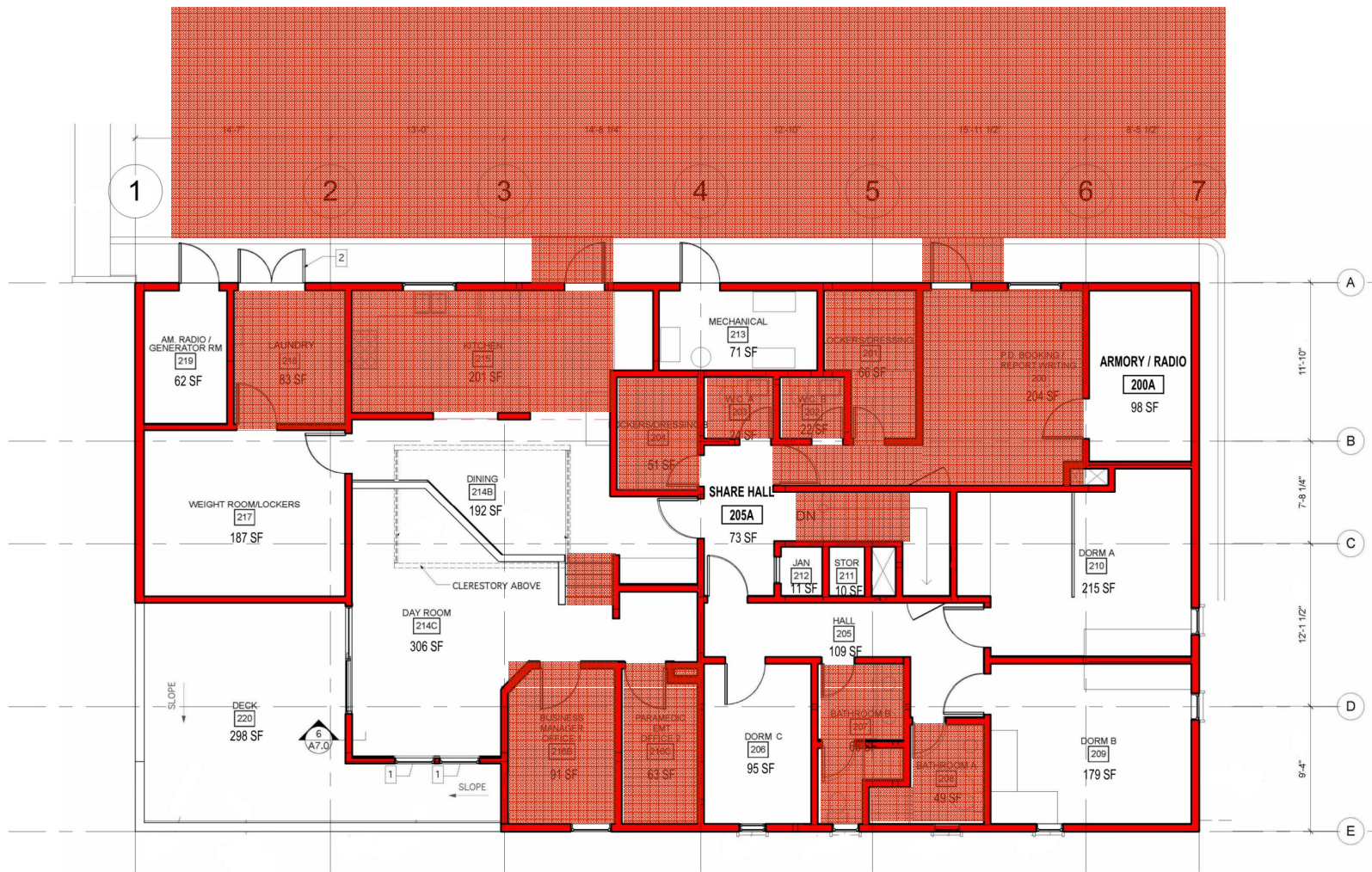


1. EXISTING SECOND FLOOR PLAN
1/8" = 1'-0"

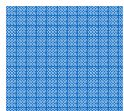
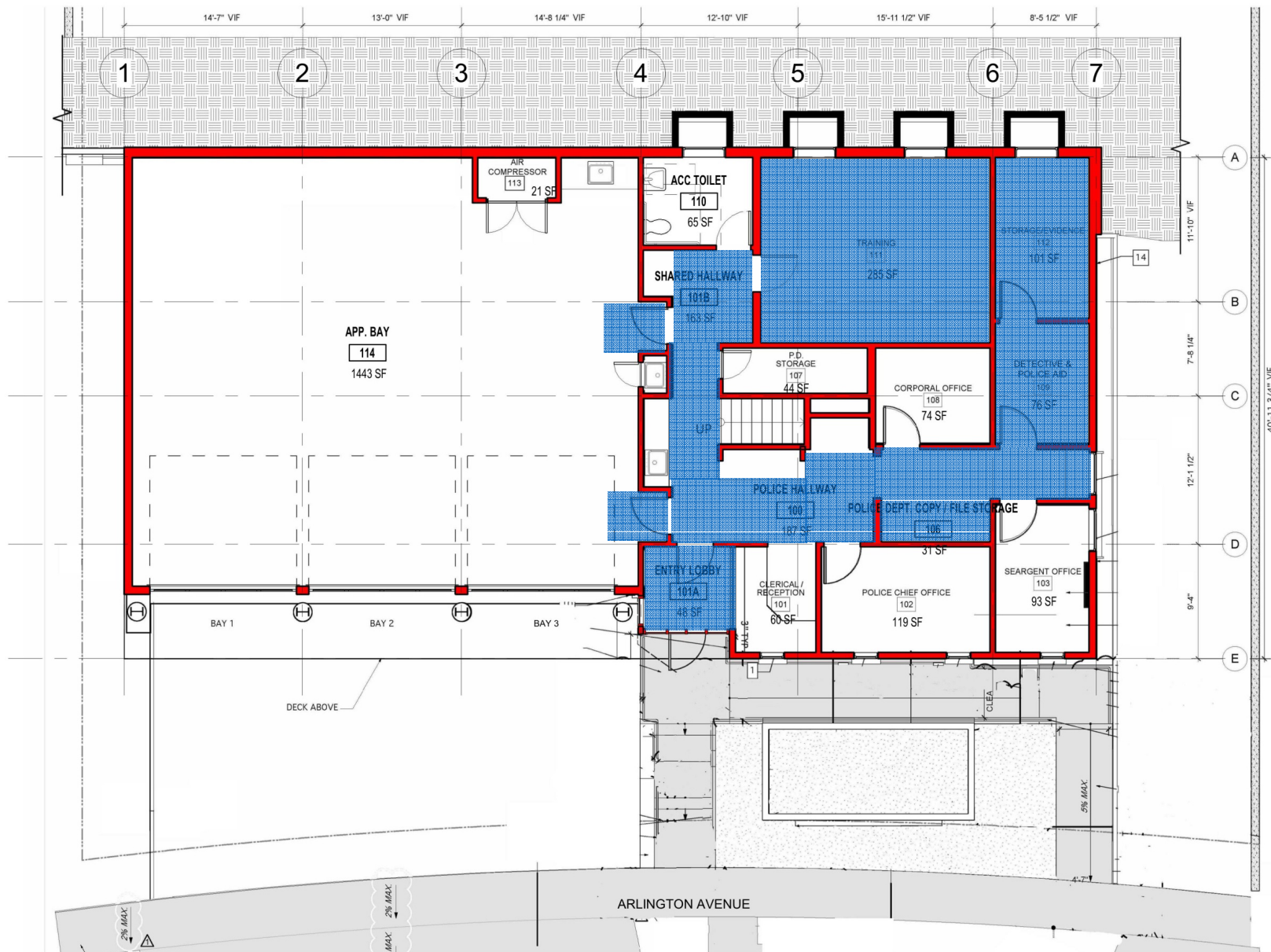
Preliminary design. Not for bidding or construction purposes.



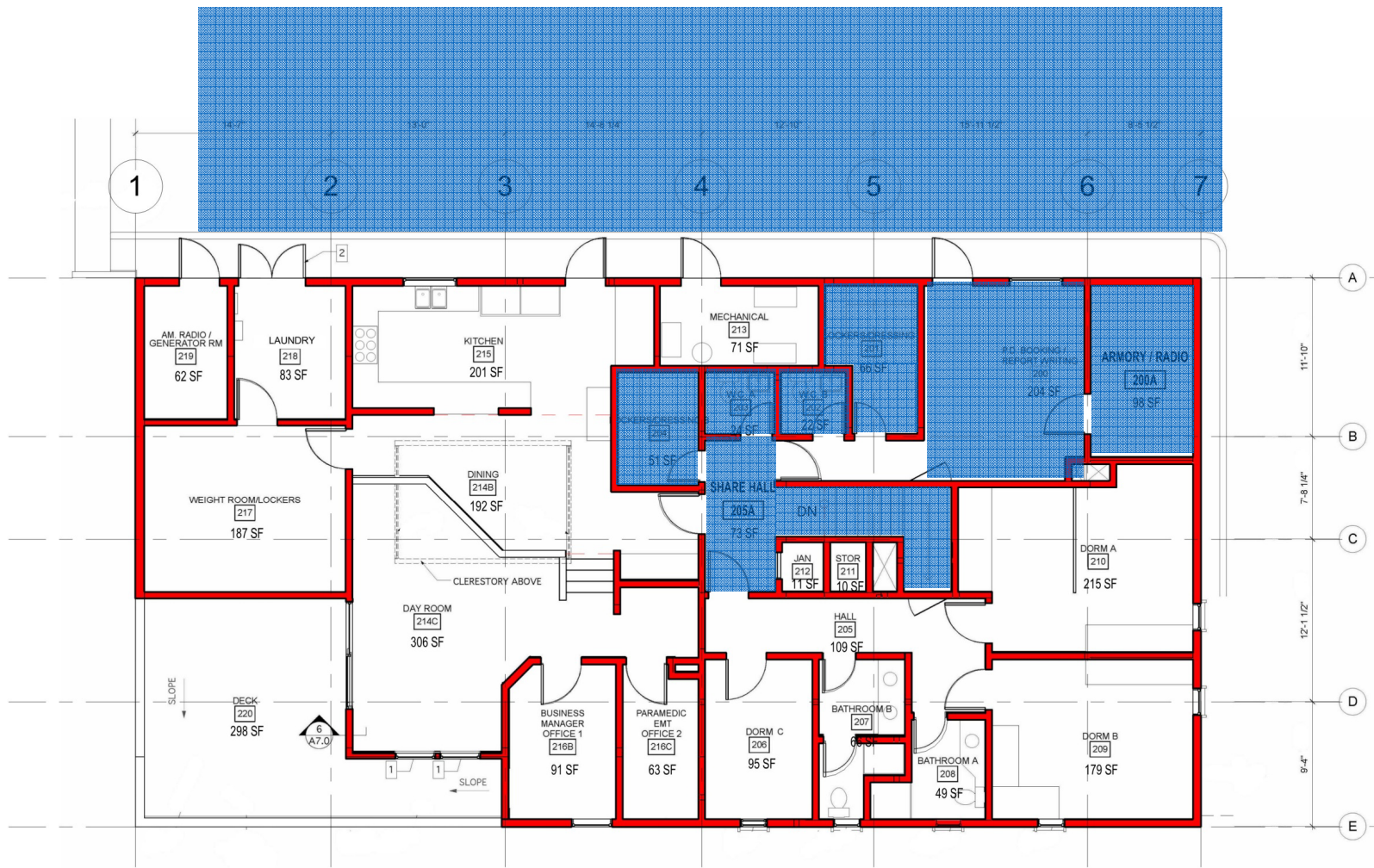
ADA non-compliant areas



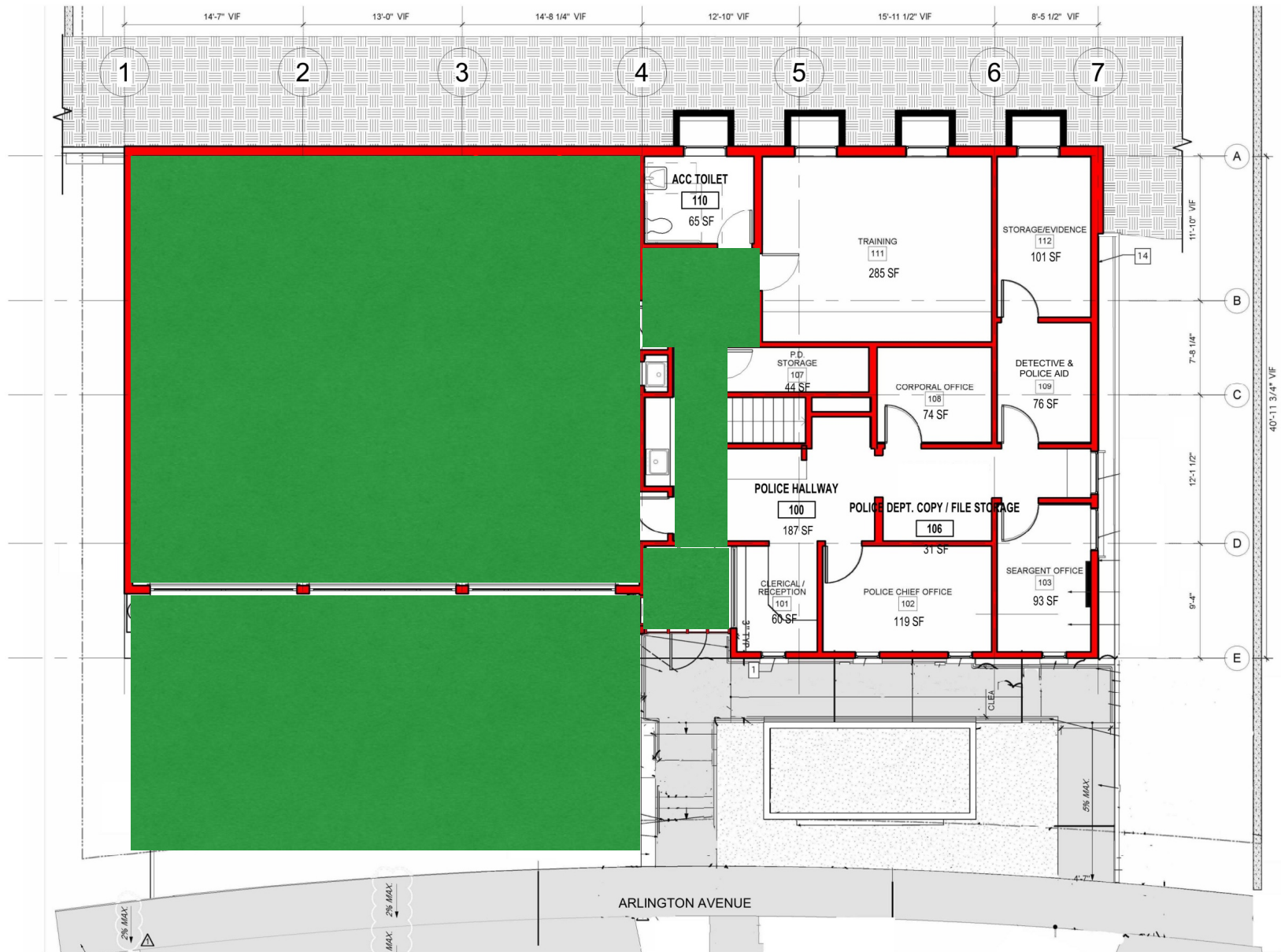
ADA non-compliant areas



Police Department: non-conforming/non-compliant



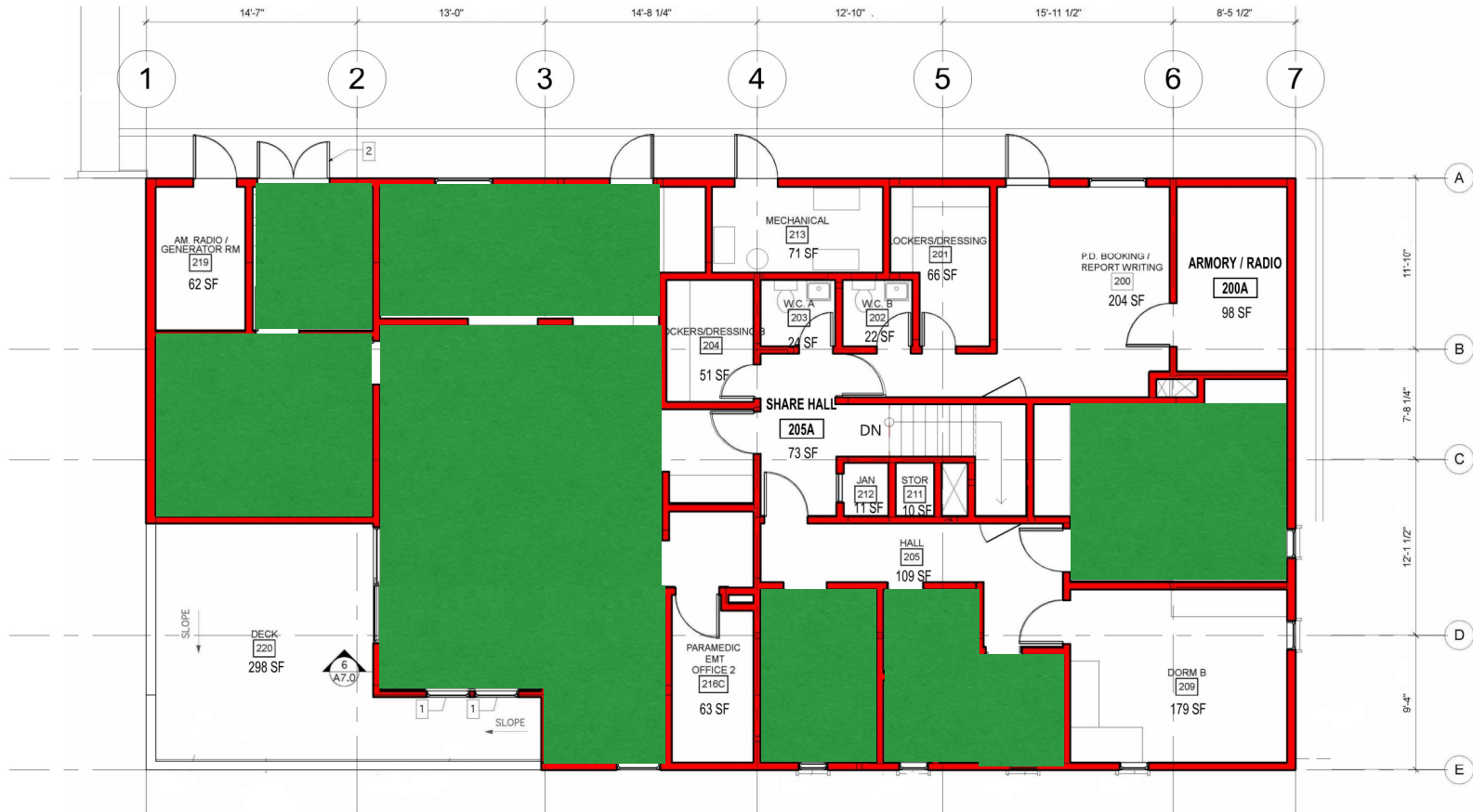
Police Department: non-conforming/non-compliant



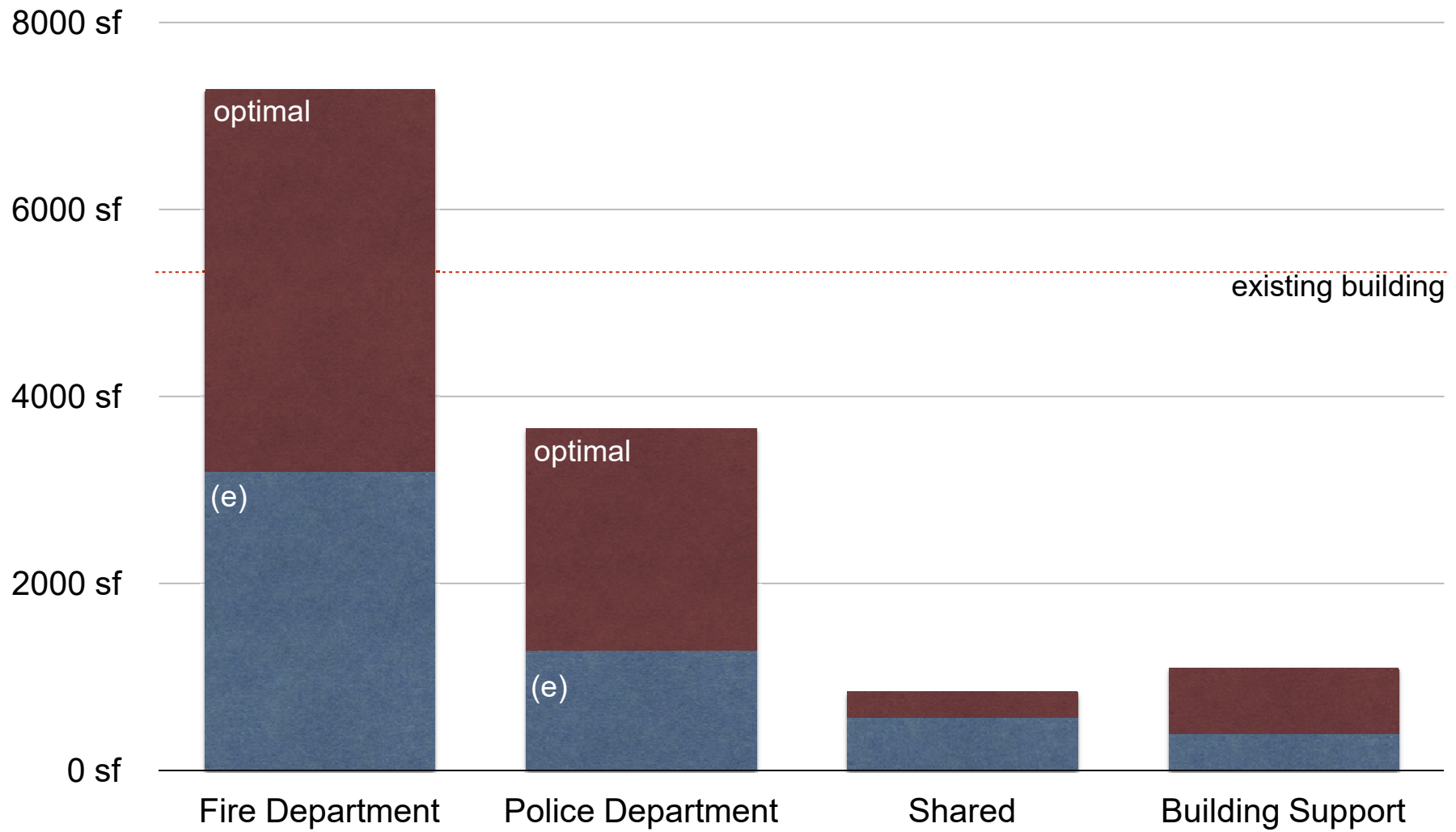
Fire Department: nonconforming/non-compliant areas



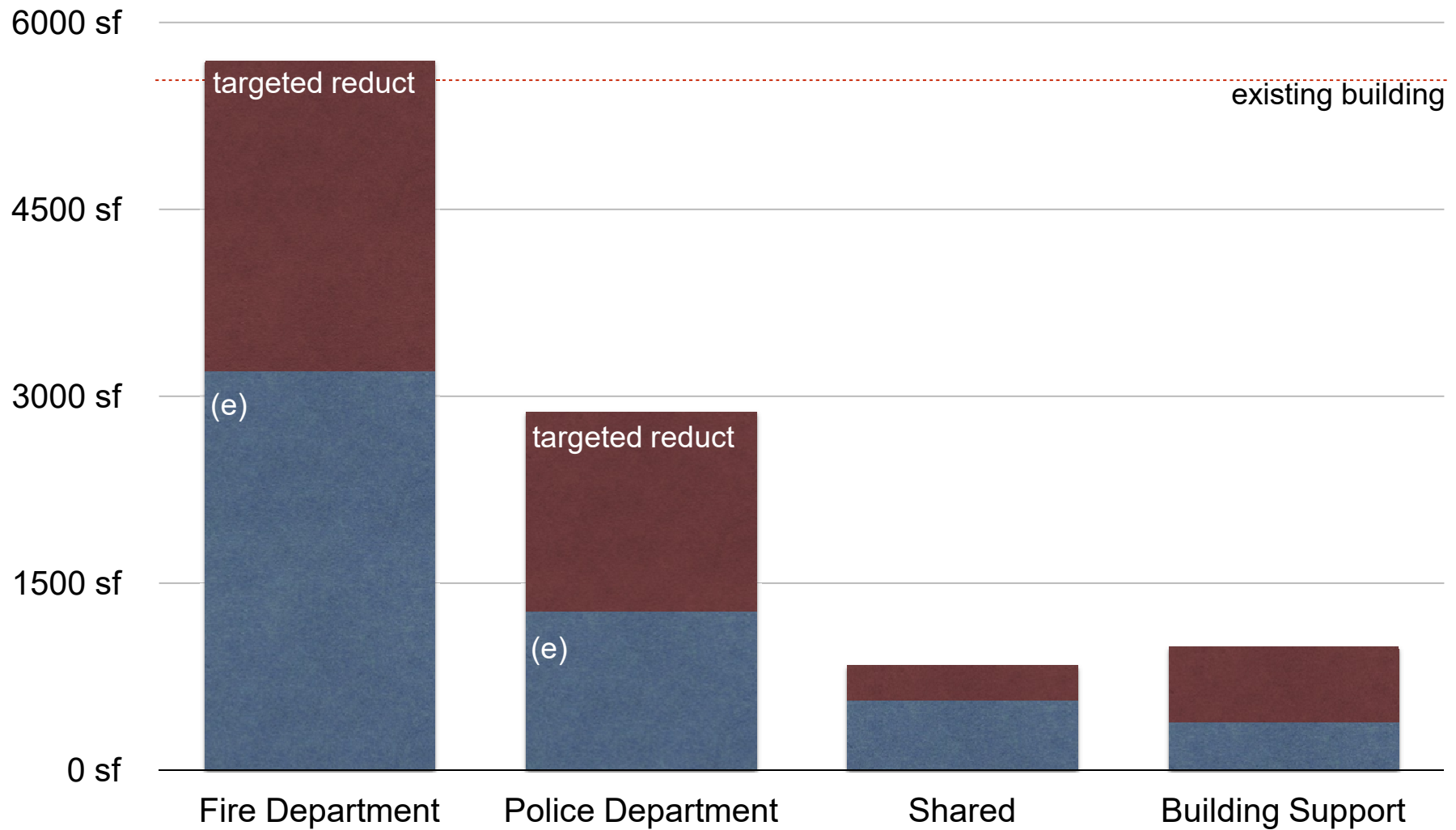
Fire Department:nonconforming/non-compliant areas



Fire Department: nonconforming/non-compliant areas

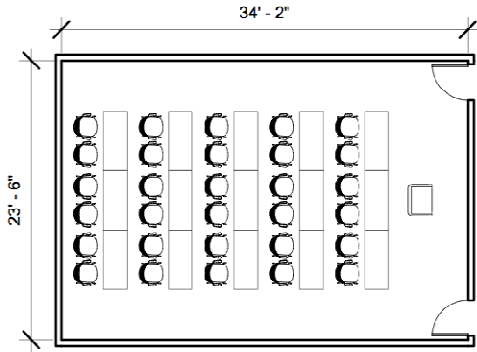


Existing vs. Optimal Program Areas

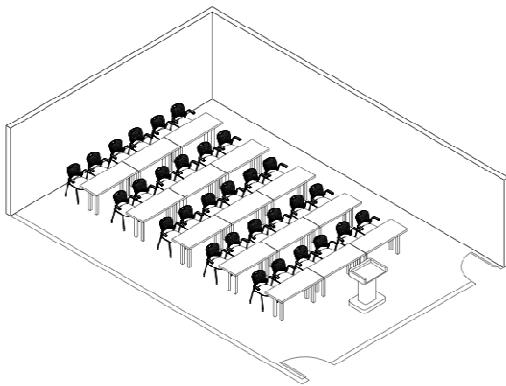


Existing vs. Targeted Reduction Program Areas

standards &
practice codes



1 FLOOR PLAN
3/32" = 1'-0"



2 PERSPECTIVE

RossDrulisCusenbery
ARCHITECTURE

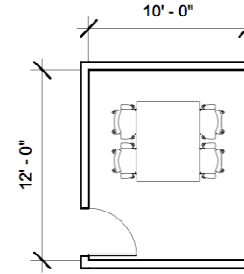
Project Number: 2012130

Date: October 29, 2012

Scale: 3/32" = 1'-0"

Drawn by: Author

ASSEMBLY
(BRIEFING)/TRAINING
ROOM 803 SF



1 FLOOR PLAN
1/8" = 1'-0"



2 PERSPECTIVE

RossDrulisCusenbery
ARCHITECTURE

Project Number: 2012130

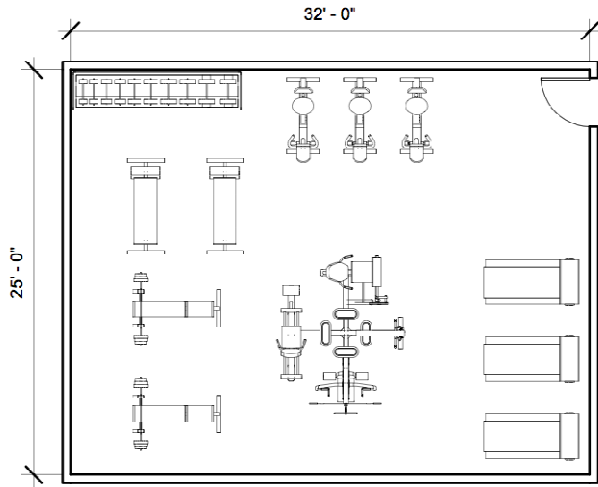
Date: October 29, 2012

Scale: 1/8" = 1'-0"

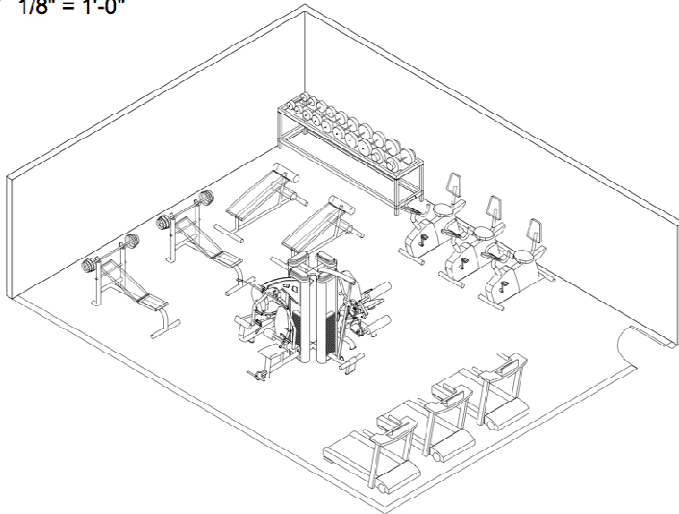
Drawn by: Author

PUBLIC
INTERVIEW
ROOM 120 SF

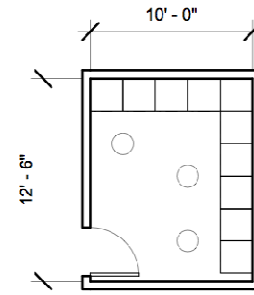
Police Station: Space Standards



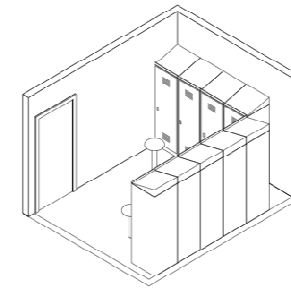
1 FLOOR PLAN
1/8" = 1'-0"



2 PERSPECTIVE



1 FLOOR PLAN
1/8" = 1'-0"

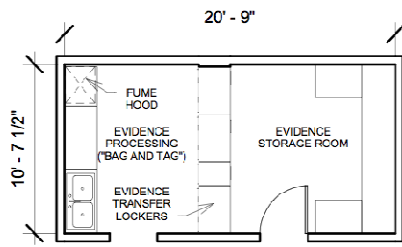


2 PERSPECTIVE

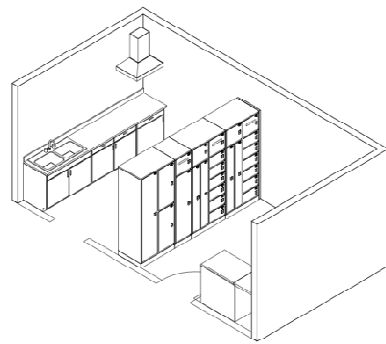
	Project Number: 2012130			WELLNESS ROOM 800 SF
	Date: October 20, 2012	Scale: 1/8" = 1'-0"	Drawn by: Author	

	Project Number: 2012130			LOCKER ROOM 125 SF
	Date: October 20, 2012	Scale: 1/8" = 1'-0"	Drawn by: Author	

Police Station: Space Standards



1 FLOOR PLAN
1/8" = 1'-0"

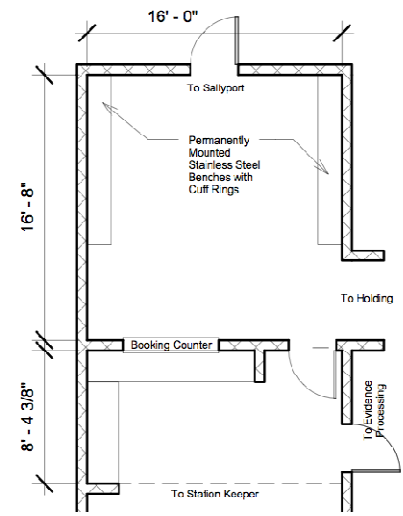


2 PERSPECTIVE

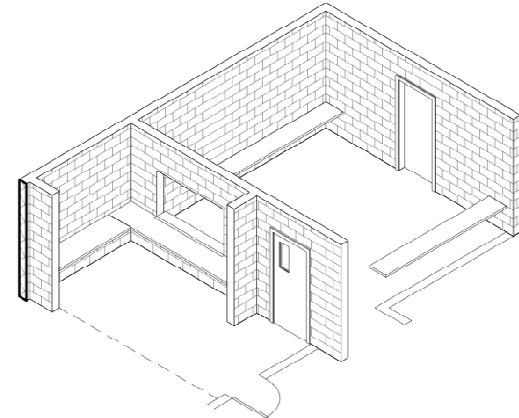
RossDrulisCusenbery
ARCHITECTURE

Project Number: 2012130
Date: October 29, 2012 Scale: 1/8" = 1'-0" Drawn by: Author

EVIDENCE
PROCESSING
AND STORAGE
100/120 SF



1 FLOOR PLAN
1/8" = 1'-0"



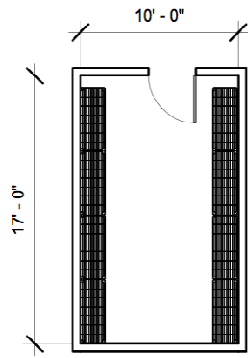
2 PERSPECTIVE

RossDrulisCusenbery
ARCHITECTURE

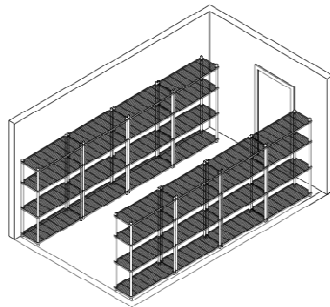
Project Number: 2012130
Date: October 29, 2012 Scale: 1/8" = 1'-0" Drawn by: Author

BOOKING/INTAKE
400 SF

Police Station: Space Standards



① FLOOR PLAN
1/8" = 1'-0"



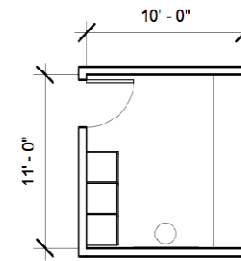
② PERSPECTIVE

RossDrulisCusenbery
ARCHITECTURE

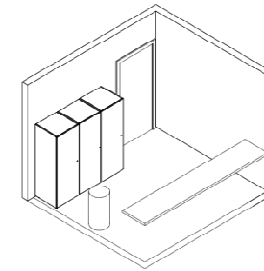
Project Number: 2012130

Date: October 29, 2012 Scale: 1/8" = 1'-0" Drawn by: Author

PROPERTY
LOCKERS/SEIZED
PROPERTY 170
SF



① FLOOR PLAN
1/8" = 1'-0"



② PERSPECTIVE

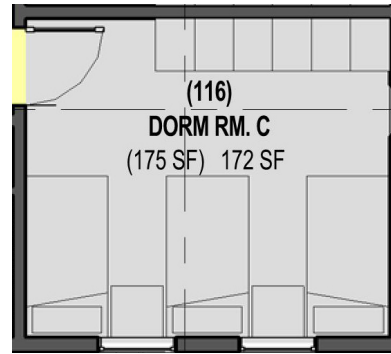
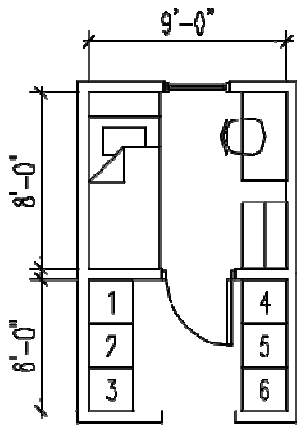
RossDrulisCusenbery
ARCHITECTURE

Project Number: 2012130

Date: October 29, 2012 Scale: 1/8" = 1'-0" Drawn by: Author

WEAPONS
CLEANING 110
SF

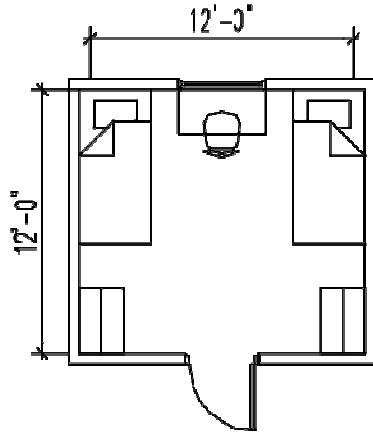
Police Station: Space Standards



433 – SLEEPING ROOM W/ LOCKER ROOM ALCOVE

SCALE: 1/8 = 1'-0"

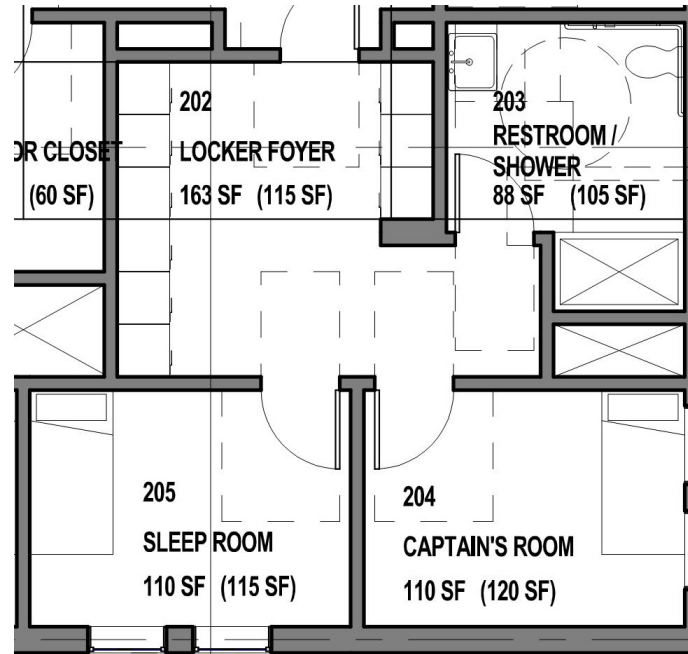
SLEEP ROOM: 72 SQ.FT.
LOCKER ALCOVE: 54 SQ.FT.
TOTAL: 128 SQ.FT.



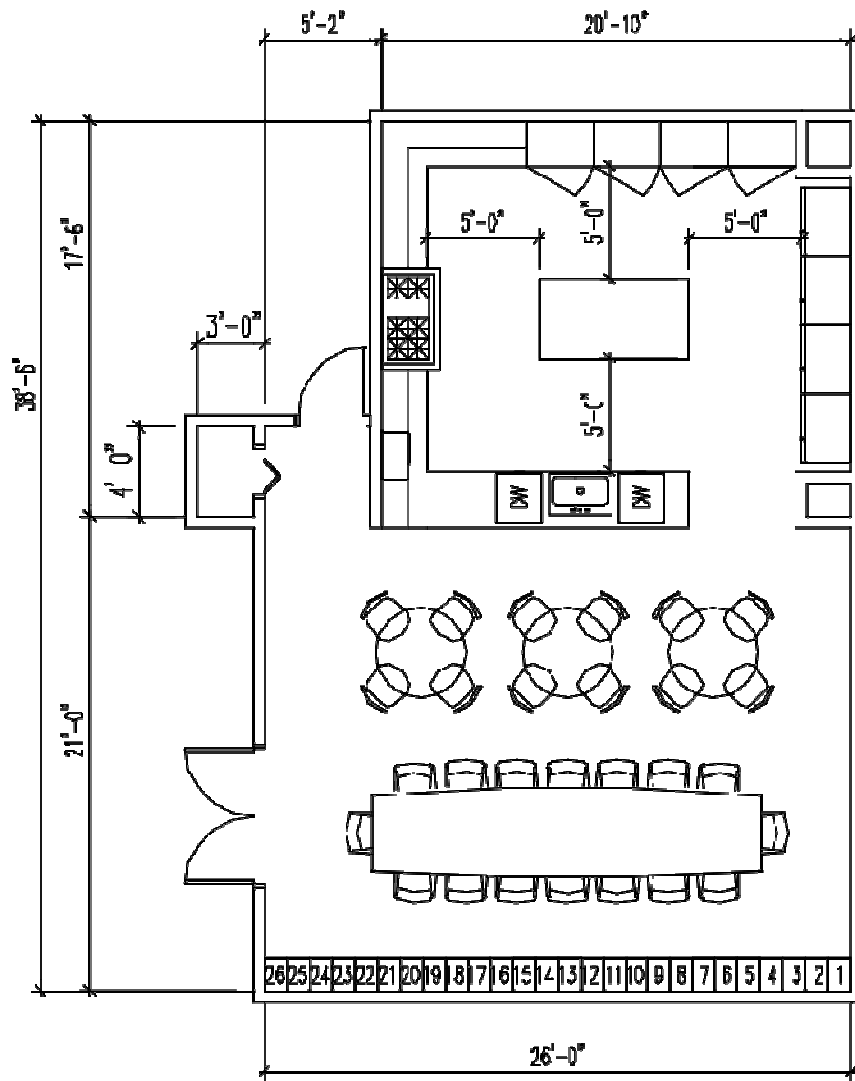
441 – RIDE ALONG DOUBLE SLEEPING ROOMS

SCALE: 1/8 = 1'-0"

SLEEP ROOM: 144 SQ.FT.



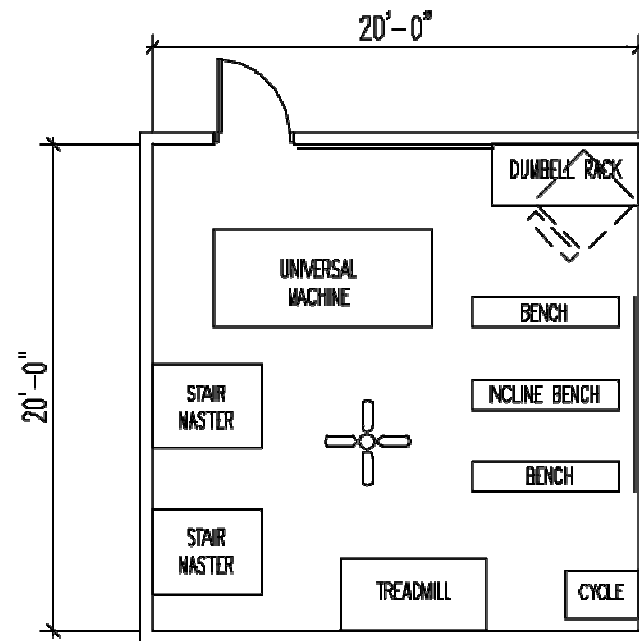
Fire Station: Space Standards



439 – KITCHEN-DINING/BEANERY

SCALE: 1/8" = 1'-0"

KITCHEN: 363 SQ. FT.
 DINING AREA: 566 SQ. FT.
 TOTAL AREA: 929 SQ. FT.

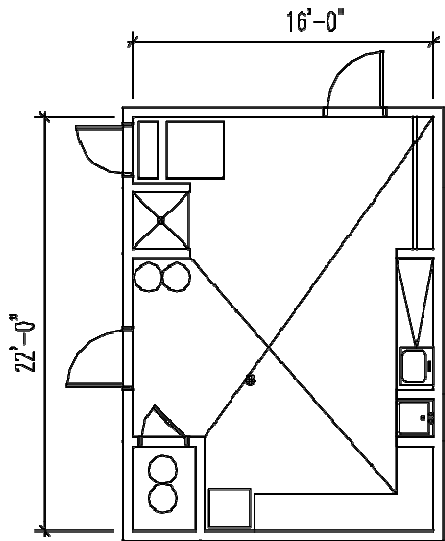


320 – EXERCISE ROOM

SCALE: 1/8" = 1'-0"

400 SQ. FT.

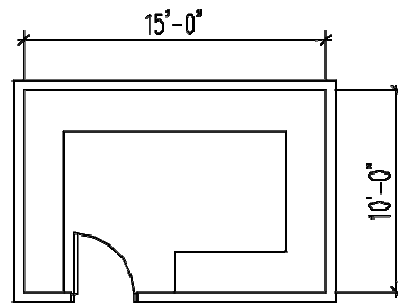
Fire Station: Space Standards



415 – DECONTAMINATION/
CLEAN ROOM/
BUNKER GEAR CLEANING

SCALE: 1/8" = 1'-0"

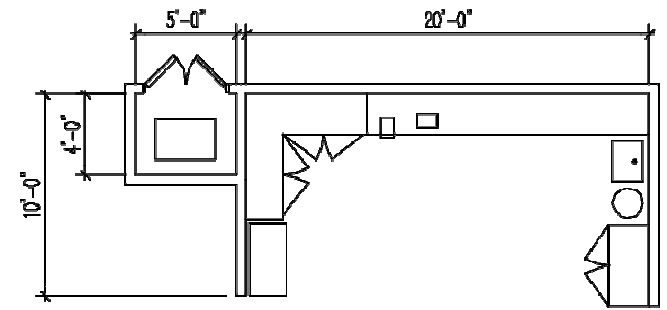
350 SQ.FT



419 – APPARATUS
EQUIPMENT STORAGE – LADDER

SCALE: 1/8" = 1'-0"

150 SQ.FT.

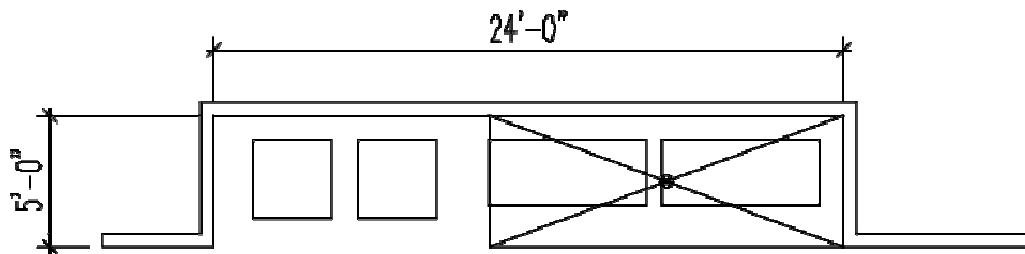


420 – MAINTENANCE
WORK AREA/SHOP

SCALE: 1/8" = 1'-0"

WORK AREA: 200 SQ.FT.
COMPRESSOR: 20 SQ.FT.
TOTAL: 220 SQ.FT.

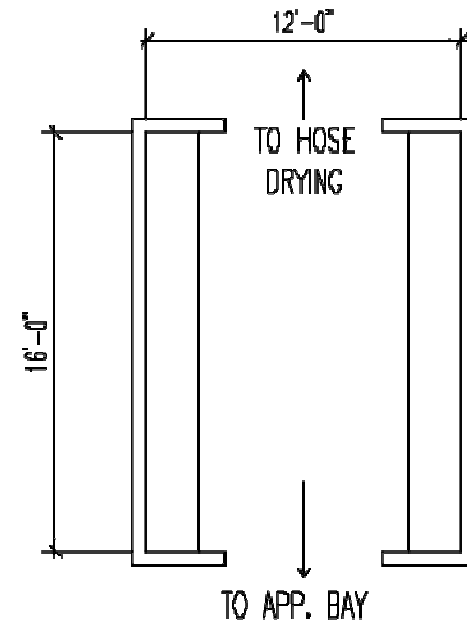
Fire Station: Space Standards



423 – HOSE DRYER/
STORAGE ALCOVE

SCALE: 1/8" = 1'-0"

120 SQ. FT.

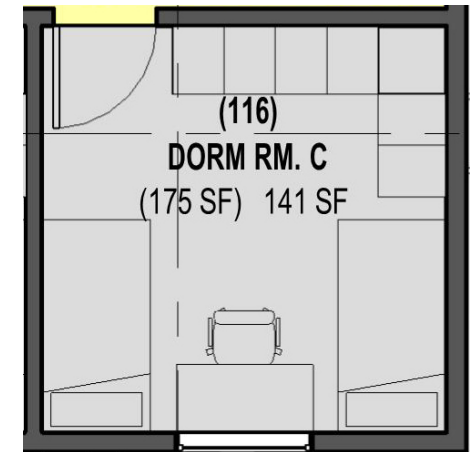
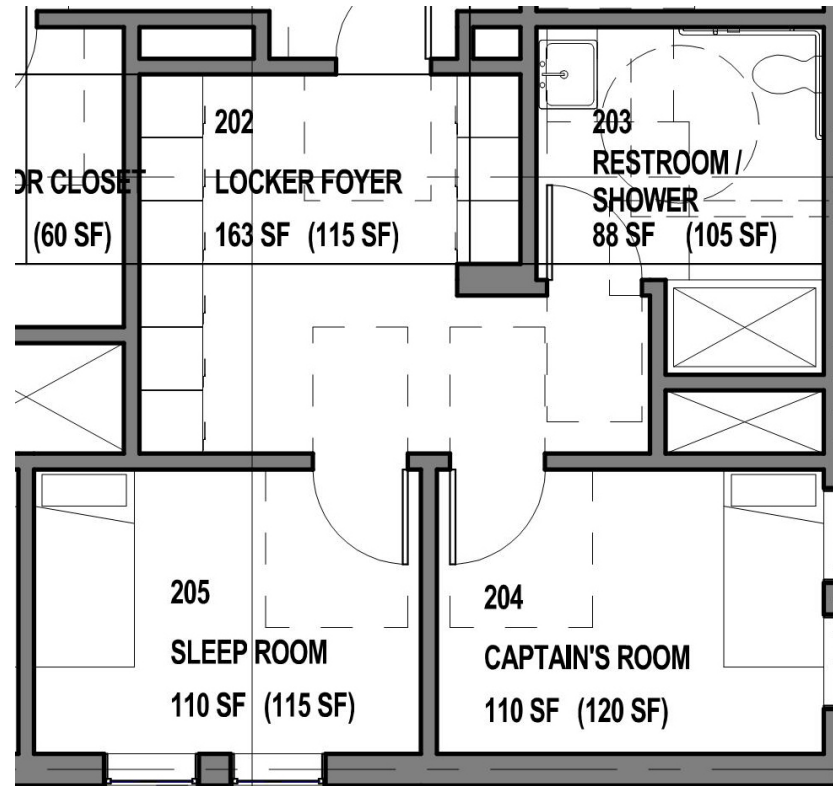
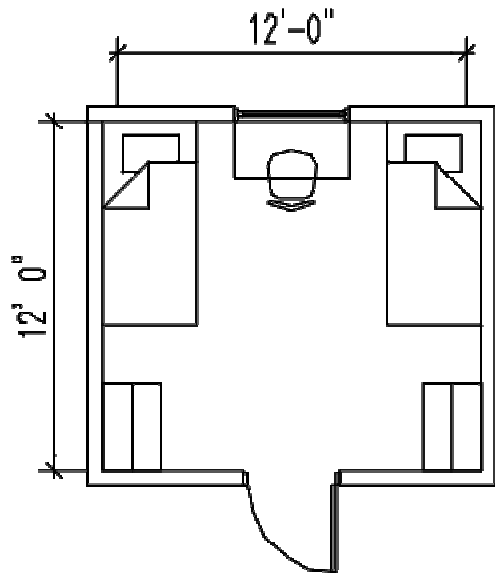


424 – HOSE STORAGE

SCALE: 1/8" = 1'-0"

192 SQ.FT.

Fire Station: Space Standards



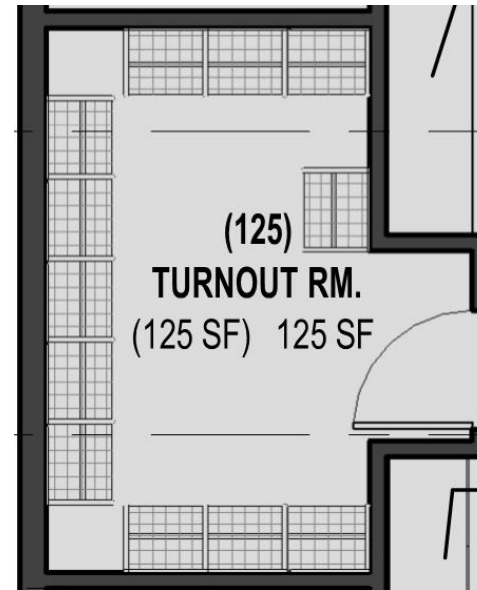
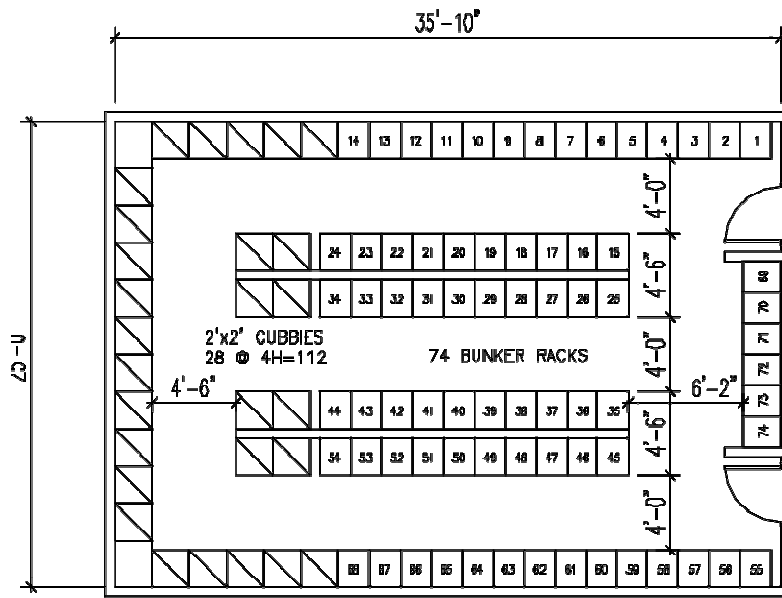
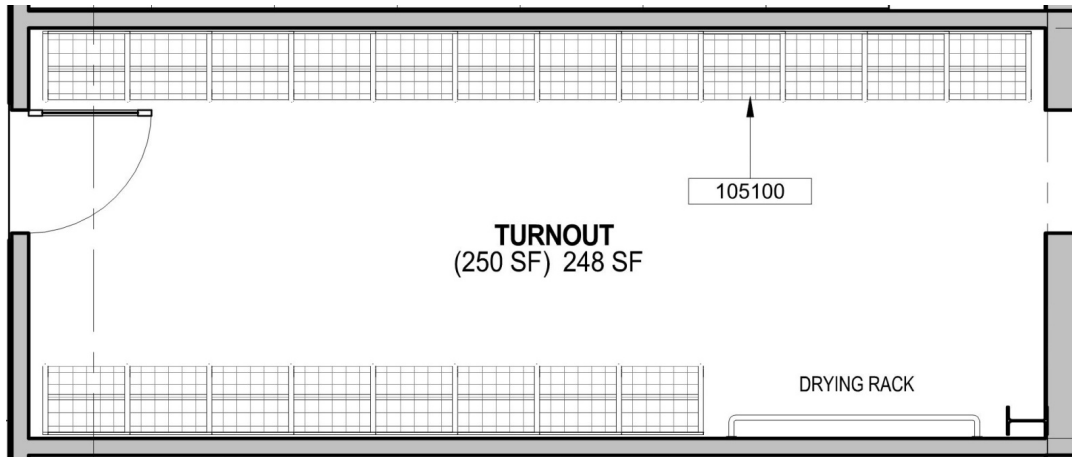
kensington PSB proposed

441 – RIDE ALONG DOUBLE SLEEPING ROOMS

SCALE: 1/8" = 1'-0"

SLEEP ROOM: 144 SQ.FT.

Fire Station: Space Standards



kensington PSB proposed

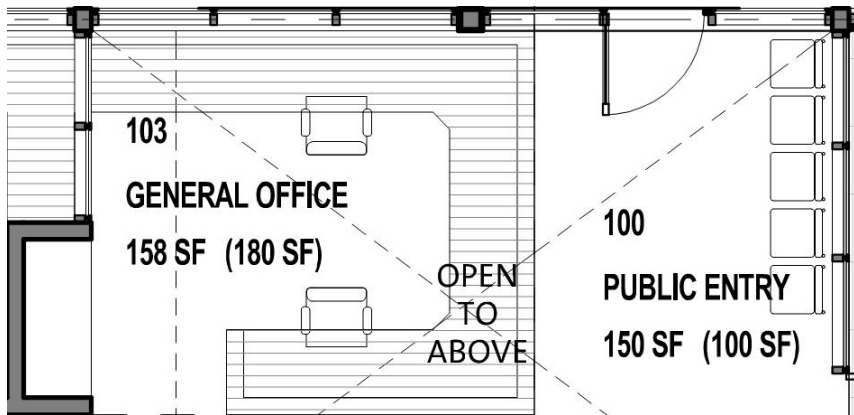
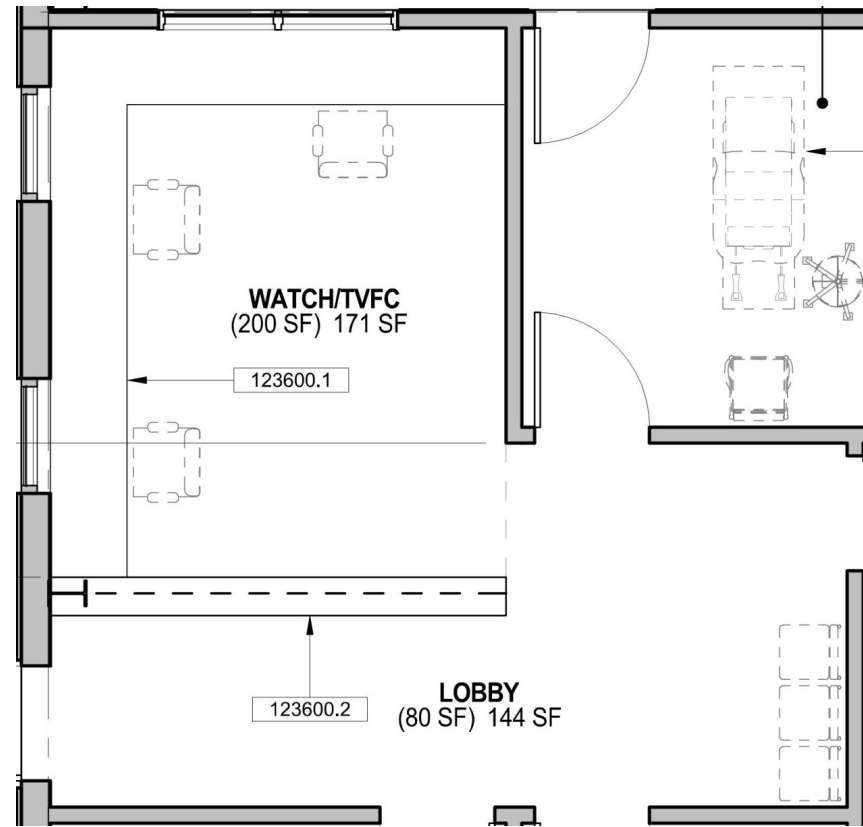
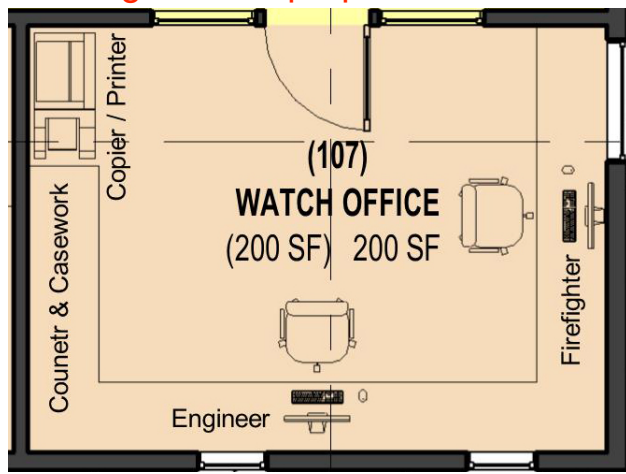
416 – BUNKER STORAGE ROOM/
DRYING ROOM

SCALE: 1/8" = 1'-0"

893 SQ.FT.

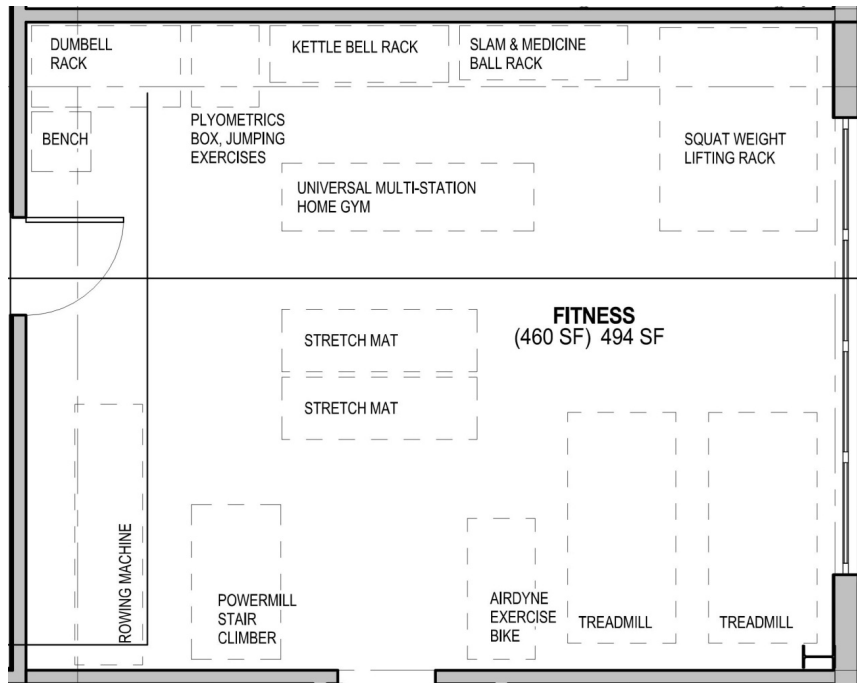
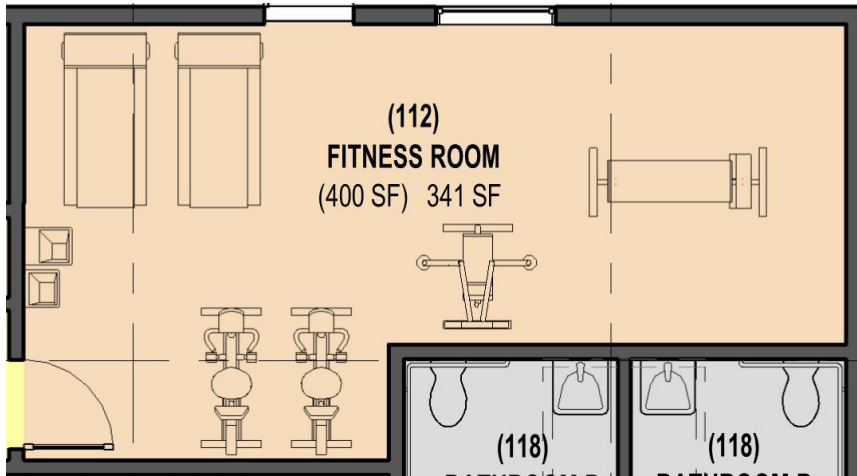
Fire Station: Space Standards

kensington PSB proposed



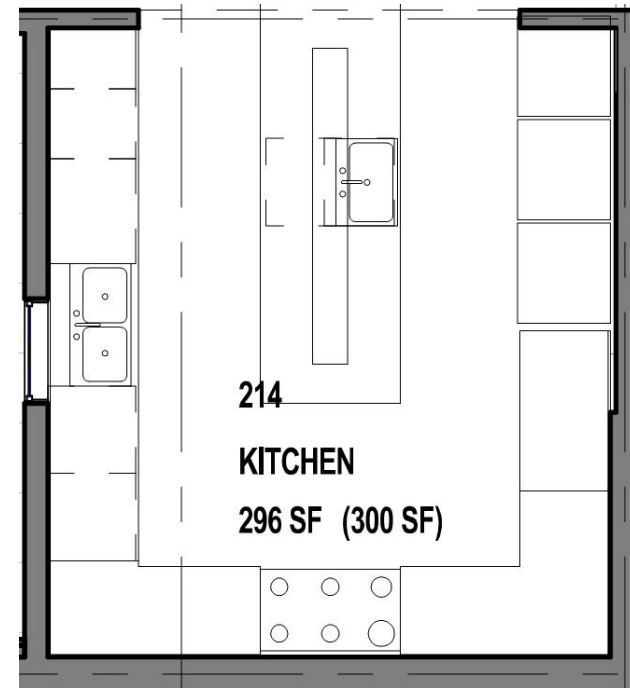
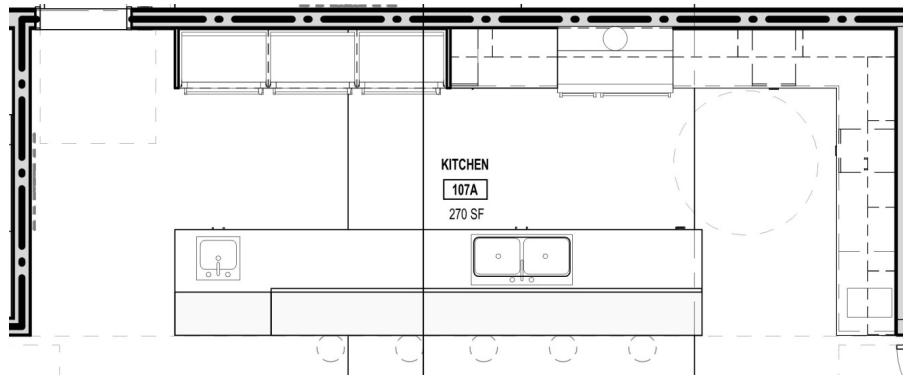
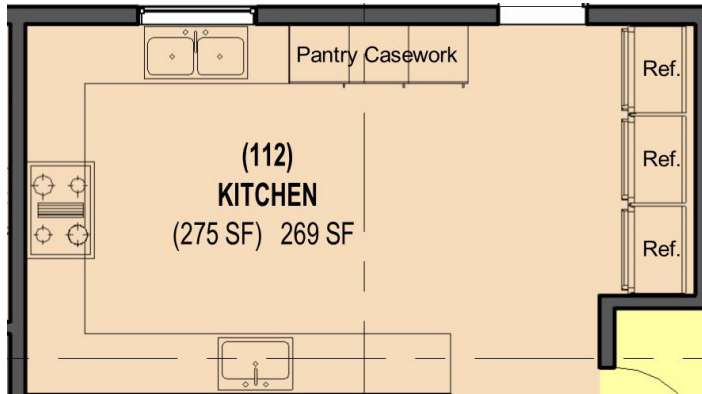
Fire Station: Space Standards

kensington PSB proposed



Fire Station: Space Standards

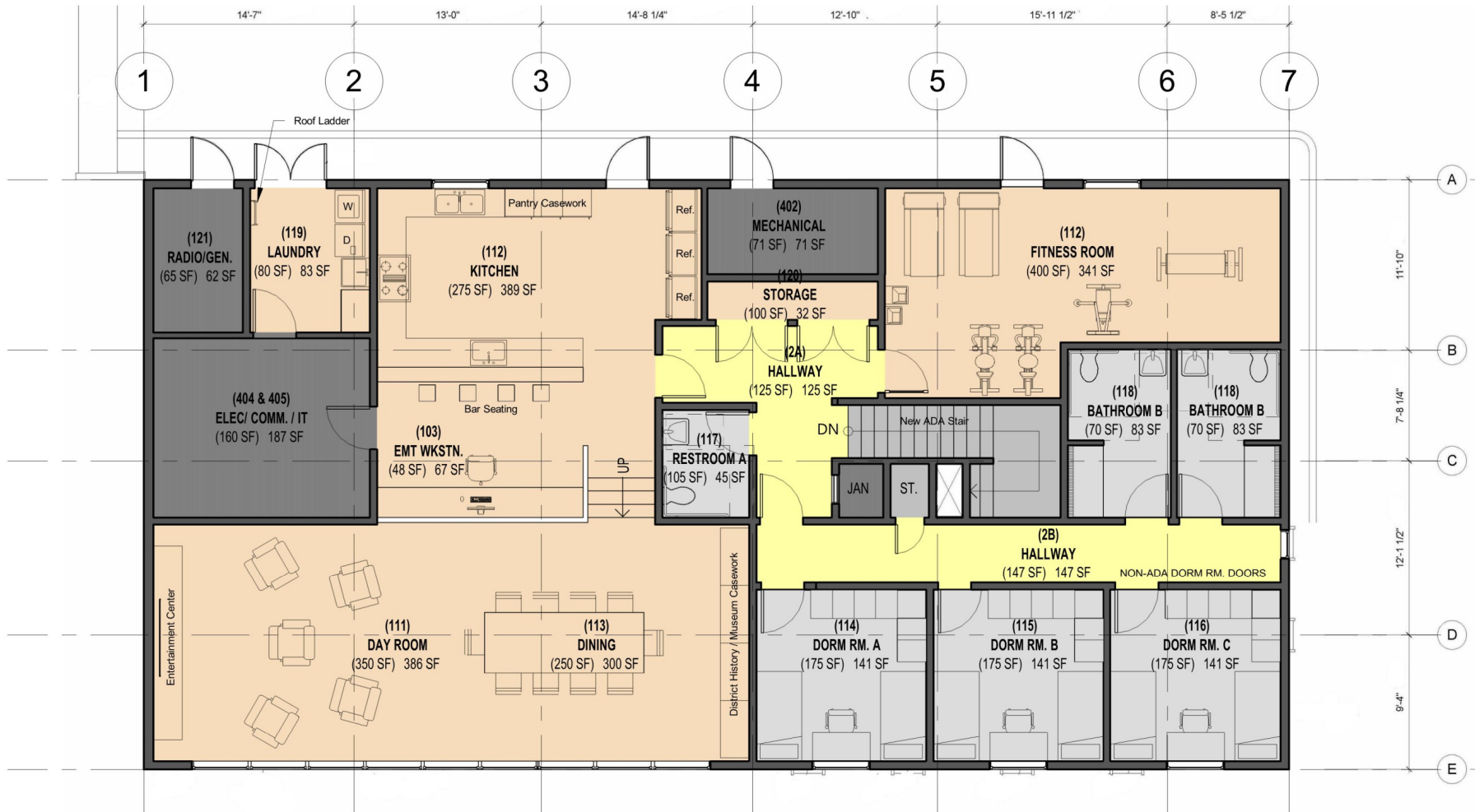
kensington PSB proposed



Fire Station: Space Standards



Fire Station Renovation First Floor



Fire Station Renovation Second Floor - 2

An aerial photograph of a densely populated residential area, likely Kensington, showing a mix of green spaces, trees, and buildings. A large, irregularly shaped pond is visible on the right side of the image. The text is overlaid on the center of the image.

kensington public safety building

- board of directors meeting

september 11, 2019

